

High Security Rooms & Doors

Meeting the requirements of the Environment Agency, HSG & NaCTSO



BIOVAULT & ORTHRUS

Tested by BRE to LPS 1175 E rating



Contents



About Burton Security	3
What is LPS1175?	5
What are Biovault & Orthrus?	9
Who are they for?	12
What do they protect against?	13
Model Range	21
Options, Finishes and Appearance	23
Associated doors and ancillary security products	25



Welcome
to Burton Security

Do you have any questions?
Feel free to contact our expert team.
We are happy to help you!

+44 (0) 1484 663388
enquiries@burtonsecurity.com



Your Trusted Global Partner in **Physical Security**

With 35 years' experience in the Physical Security sector, Burton Security is your trusted partner and specialist for secure rooms, panic rooms, vaults and other physical security.

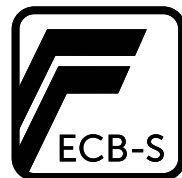
With customers in the UK, Europe, the Middle East, Africa and Asia we have a truly global outlook and a wealth of experience delivering high security, tailor made solutions for our customers.

Our Values, **Our Mission**

We have the values of a family business, looking after our customers, our staff and our local environment. **We are proud of our Yorkshire heritage**, whilst retaining a global outlook.

First and foremost, our mission is to deliver **Physical Security** to protect people, assets and the most prized possessions of our clients.

We believe in independent testing and certification of our products to UK & European standards. This is the best way to deliver the highest levels of proven security. We are also passionate about giving the customer what they want and finding the right solutions to their needs. **The result is that we have become specialists in customised and tailor made solutions.**



What is LPS1175

BRE Global works closely with government, police, insurers, consultants, architects, and end users to develop standards and certification schemes. These ensure security equipment and systems deliver effective levels of protection against a range of hostile threats, including criminals and terrorists.

LPS1175 Issue 8

LPS1175 has been developed to protect critical infrastructure, government buildings and commercial enterprise against physical attack from criminals, terrorists, protesters and vandalism.





BRE Global is a world leading research, testing and certification body. It has published several security standards, covering a wide range of product types.

LPS1175 is a standard that focuses on the physical security of intruder resistant products. It is a standard for protecting against forced entry (without fear of making noise), to delay attackers' attempts to gain unauthorised entry. It is a particularly tough standard in which 95% of products fail testing.

Testing uses different sets of tools which are graded according to a combination of power, effectiveness, ability to obtain, conceal and transport. The tool sets range from A-H (A being lowest and H being highest). Products are attacked with the chosen tool sets and the time to gain access is recorded. A score is then given which is displayed as a letter A-H for the tool set and a number 1-20 to indicate the time in minutes.

It is very important to understand that laboratory timings do not reflect real world times, which might typically take 3 times longer.

LPS1175 draws on extensive research conducted over many years by the Police, Insurers & UK Government, as well as by BRE experts.



www.redbooklive.com

What are Biovault & Orthrus?

Developed to meet the LPS1175 E ratings

Biovault & Orthrus are modular rooms or cabinets designed to meet the regulatory requirements for the secure storage of Radiological and Biological materials.

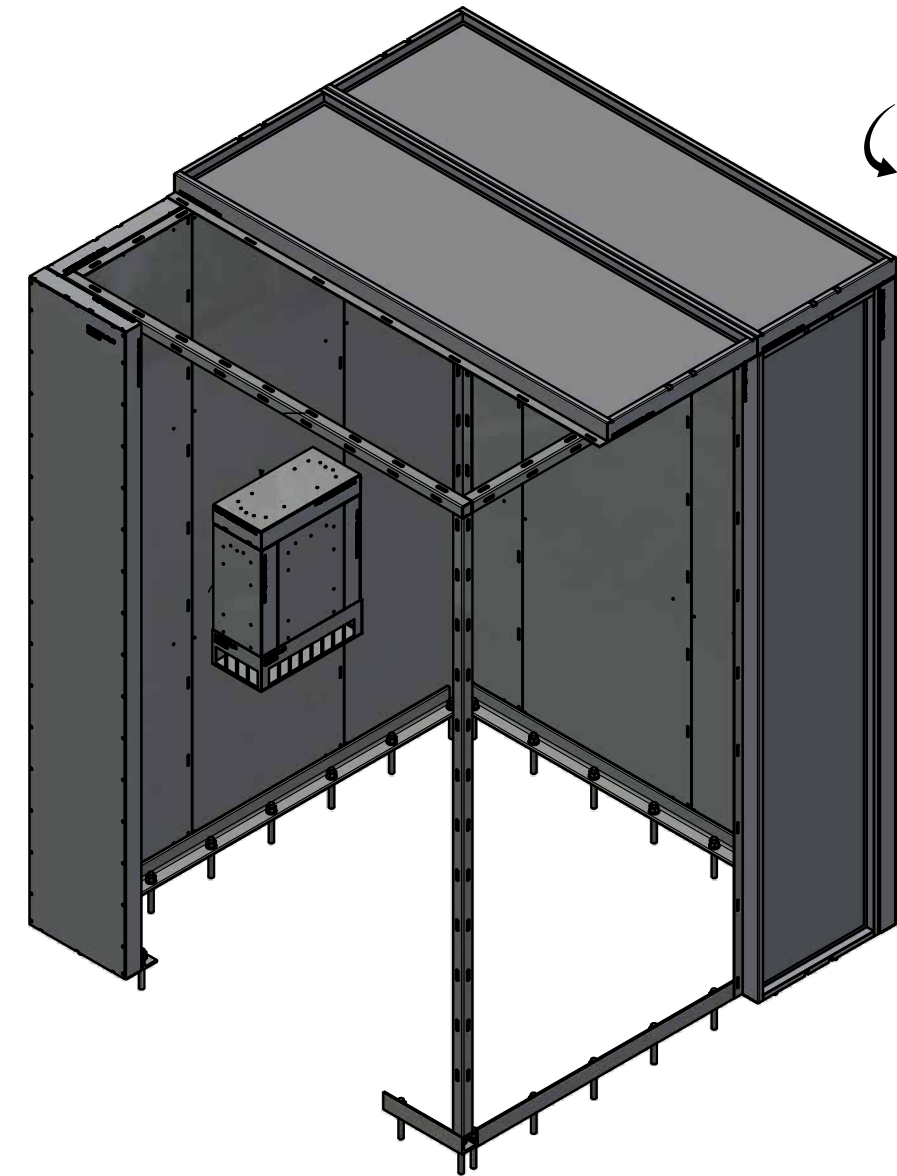
They are tested and certified to LPS1175 and meet the requirements of the Police, Environment Agency and the Homeland Security Group. Each room is built to order according to your specific size requirements.

They are delivered in panel format that are assembled and welded together to form a complete enclosure. This special design means that they can be easily installed in most locations, even if they are in basements or upper floors. It is also possible to deliver smaller rooms and cabinets pre-assembled.

Biovault offers the thinnest barrier material on the market at this security level and is also lightweight. Standard panels are just 27mm-70mm thick, allowing you to maximise your space.



Scan Me!



Biovault Doors





Who are they for?

Biovault has been designed to meet the requirements of NaCTSO, The Environment Agency and the Homeland Security Group.

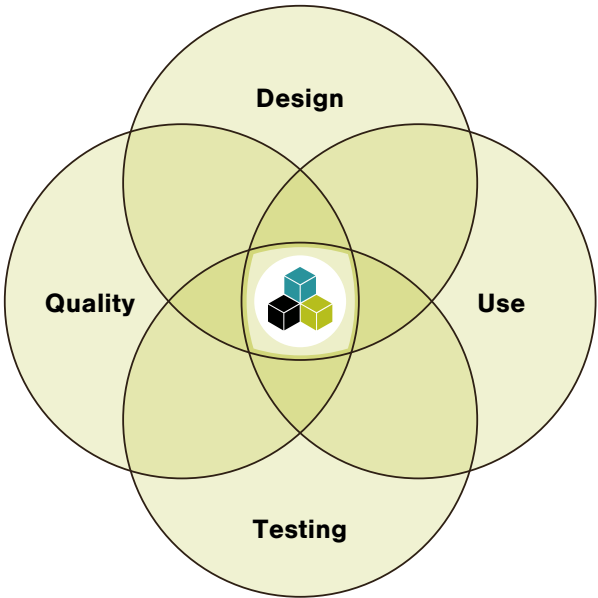
Biovault is the ideal solution for brachytherapy departments, university and pharmaceutical research centres, vaccine laboratories, the nuclear industry, and companies that use density and flow rate gauges or other similar industrial equipment. Orthrus is specifically designed to protect critical infrastructure and to provide secure storage for high-value goods in the jewellery and luxury sectors.



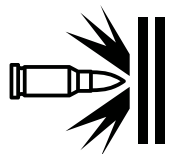
Orthrus can also be used as a very high security panic room where the very best protection is demanded.

What do Biovault & Orthrus Protect Against?

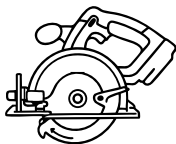
Biovault & Orthrus are offered in 5 different security ratings: Biovault is certified to LPS1175 E10, E15 & E20, whilst Orthrus meets F10 & G5. This means that these two high security products protect against all of the tool lists A-E and Orthrus will offer additional protection against the very high powered tools listed in the F & G sections.



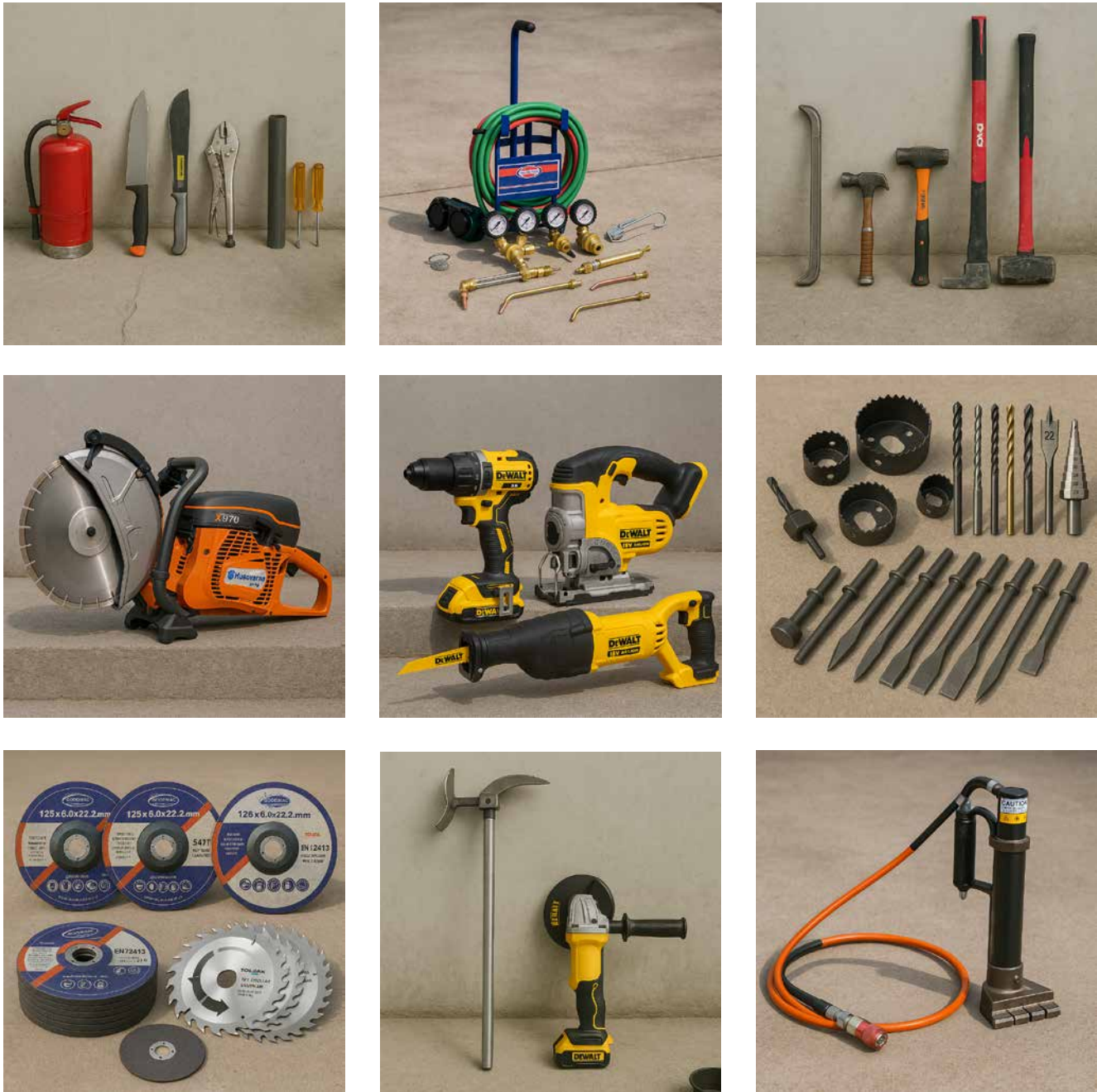
Orthrus can be optionally offered with additional bullet resistant steel linings



BALLISTIC



ATTACK RESISTANT



Weapon type		Caliber	
Rifle		22LR	
Automatic pistol		9 mm Luger	
Hand gun		357 Magnum	
Hand gun		44 Rem. Magnum	
Kalachnikov		7.62 x 39	
Assault rifle		5.56 x 45	

Installation

Thin and lightweight, its easy to install

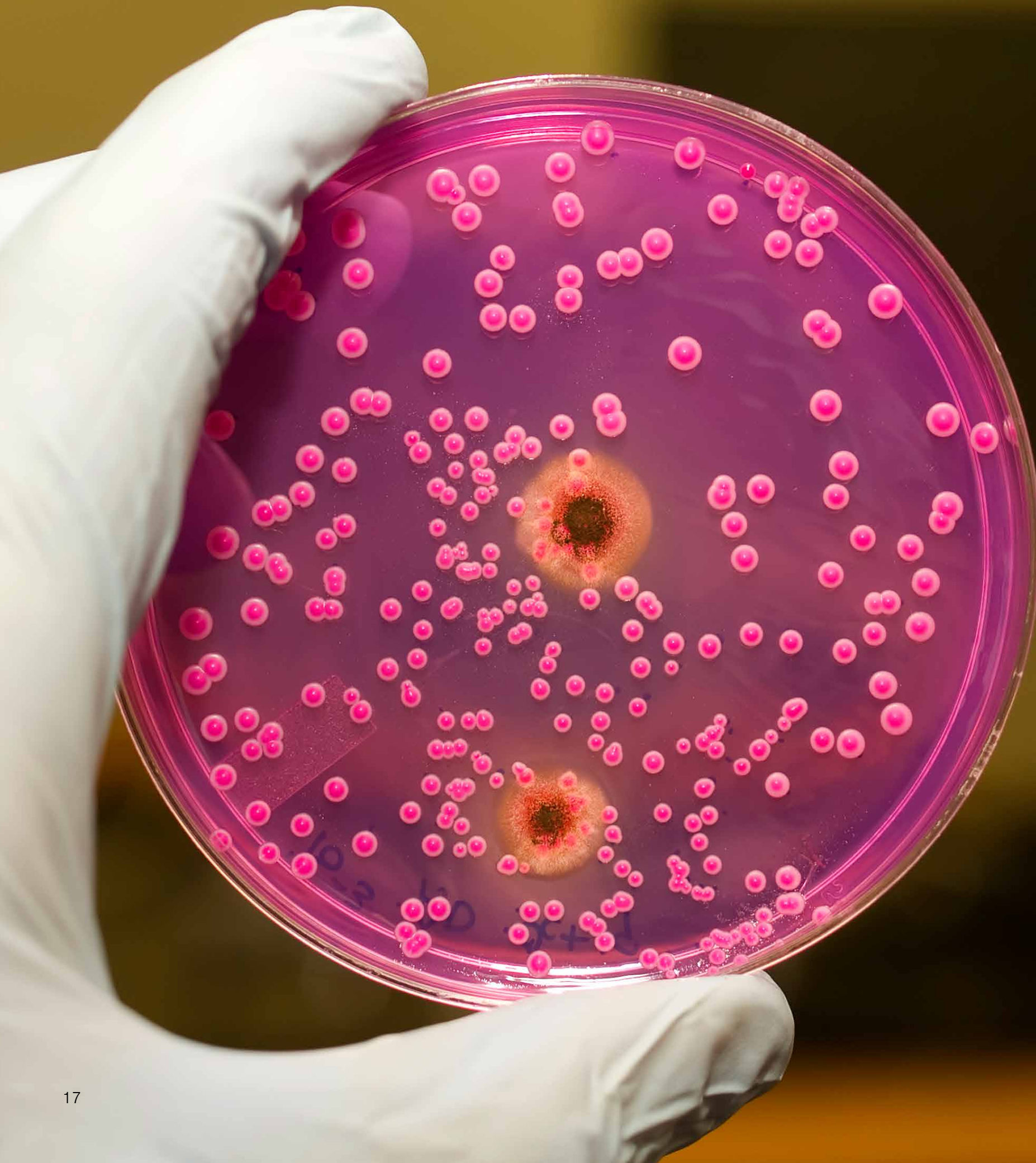
Biovault & Orthrus rooms are delivered in panels, typically about 600mm wide. These are assembled together on-site and then welded from the inside. A typical installation takes between 2-10 days depending on size. If very large rooms are required, then additional structural steel beams are supplied to support the roof. For smaller cabinets typically required for brachytherapy departments, complete pre-assembly in our workshop is possible. This avoids on-site hot works and disruption.

Panels can be painted or finished with any type of boarding to fit in with the design of the building.



CERTIFIED
ISO 9001





SECURITY FOR:

- **CANCER TREATMENT CENTRES**
 - **LABORATORIES**
- **PHARMACEUTICAL FACILITIES**
 - **RESEARCH INSTITUTIONS**
 - **BIOTECH & LIFE SCIENCES**
 - **NUCLEAR**
 - **OIL & GAS**
 - **MANUFACTURING**
 - **CONSTRUCTION**
- **CHEMICAL MANUFACTURING**

The Ideal High-Security Storage Solution



**HIGH-SECURITY
CERTIFICATION**

**OPTIMISED FOR
SENSITIVE MATERIALS**

**SPACE-EFFICIENT
DESIGN**

**CUSTOMIZABLE
CONFIGURATIONS**

**VERSATILE DOOR
OPTIONS**

**AESTHETIC AND
FUNCTIONAL FINISHES**

Model Range

Model	Resistance grade	Min/Max * Height (mm)	Min/Max* Width (mm)	Min/Max Depth (mm)	Thickness (mm)	Weight (approx. kg)
<div></div> Biovault walling	LPS1175 E10, E15 & E20	Min 2057mm Max 4155mm	Min 810mm No Maximum	Min 500mm No Maximum	27mm 70mm	90-107kg/m2
<div></div> Orthrus walling	LPS1175 F10 & G5	Min 2057mm Max 4155mm	Min 810mm No Maximum	Min 500mm No Maximum	70mm	107kg/m2
<div></div> Biovault & Orthrus door	LPS1175 E10 - E20 LPS1175 F10 & G5	Min 1810mm Max 3950mm	Min 510mm Max 1950mm	-	160mm	900kg

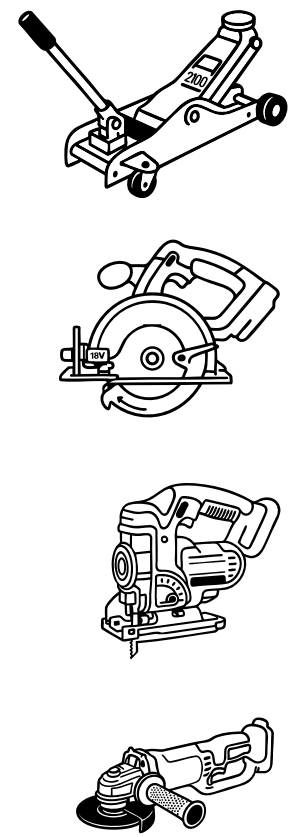
Bullet Resistance On special request

bre

LPS1175 Explained

www.redbooklive.com

Threat	<div><div></div><div></div><div></div><div></div><div></div><div></div><div></div></div>	Tool Set	Security Rating						
			H	H1	H3	H5	H10	H15	H20
			G	G1	G3	G5	G10	G15	G20
			F	F1	F3	F5	F10	F15	F20
			E	E1	E3	E5	E10 (SR5)	E15	E20
			D	D1	D3	D5	D10	D15	D20
			C	C1	C3	C5	C10	C15	C20
B	B1	B3	B5	B10	B15	B20			
A	A1	A3	A5	A10	A15	A20			
			1	3	5	10	15	20	
			Delay (Minutes)						



Biovault

Options, Finishes and Appearance

In their basic state, Biovault & Orthrus panels are quite industrial. They have a raw concrete exterior and a primed steel interior. However, it's possible to offer a fully painted steel finish, a plasterboard finish as well as cladding with cleanroom panels and fibreboard in a large range of colours and designs.



Aesthetic and Functional Finishes

Recommended finishes					
Setting	Basic concrete/primed steel	Painted steel	Cleanroom panels	Fibreboard	Plasterboard
Hospitals			✓	✓	
Industrial	✓	✓			
Laboratories			✓		
Panic Rooms					✓

Associated doors and ancillary security products

A range of alternative LPS1175 rated doors can be offered to suit your requirements.



Biovault doors are cost-effective for cabinets, pods, and warehouses. Metal+ doors offer more flexibility, finishes, lock types, closers. You can also choose step-free access, monitoring, and automation. For some projects, it's also possible to integrate special roller shutters.

Please enquire for our product specific catalogues on residential, office and panic room doors.

Metal+ Doors

AT THE HEART OF EVERY HEINEN DOOR

The Heinen heavy-duty, high-security steel doorsets offer an unrivalled combination of performances. Options include burglary, fire, smoke, bullet & blast resistance, alongside high acoustic & thermal performance as well as options for emergency & panic escape. The Metal+ steel doors have always remained faithful to their primary objective: to provide protection while guaranteeing stability and robustness that enable heavy-duty use of the door.



Performances

► Optional and cumulative

- Fire

Wind resistance

Burglary

Ballistic

Blast

Accoustic
- Radiation

Thermal

Airtightness

Water tightness

Smoke

Panic escape

*The available performance features are subjected to the installation method.

From the simplest to the most demanding requirement

The winning combination for a minimal total cost



Stainless steel & special paint options

Step free access & automation

High security and flexible locking options

10 or 15 years warranty defined by the installation method





Our growth is through design,
innovation and investment
in British engineering.

Our mission is to fortify the foundations of security by delivering forward-thinking physical security solutions. We are driven by a commitment to anticipate and adapt to evolving threats, providing our clients with proactive, cutting-edge security measures.

Security is our top priority!

**Your personal
contact**

If you have any questions or technical concerns, our competent team is always on hand to help you in the shortest time possible.



Wayne Mack

Commercial & Project Sales Manager
wayne.mack@burtonsecurity.com
+ 44 01484 663388

High Security Rooms & Doors



Scan Me!

BIOVAULT & ORTHRUS



www.burtonsecurity.com | +44 (0) 1484 663388 | enquiries@burtonsecurity.com
Brockholes Business Park, Rock Mill Road, Holmfirth, HD9 7BN