

CATALOG

Special panels

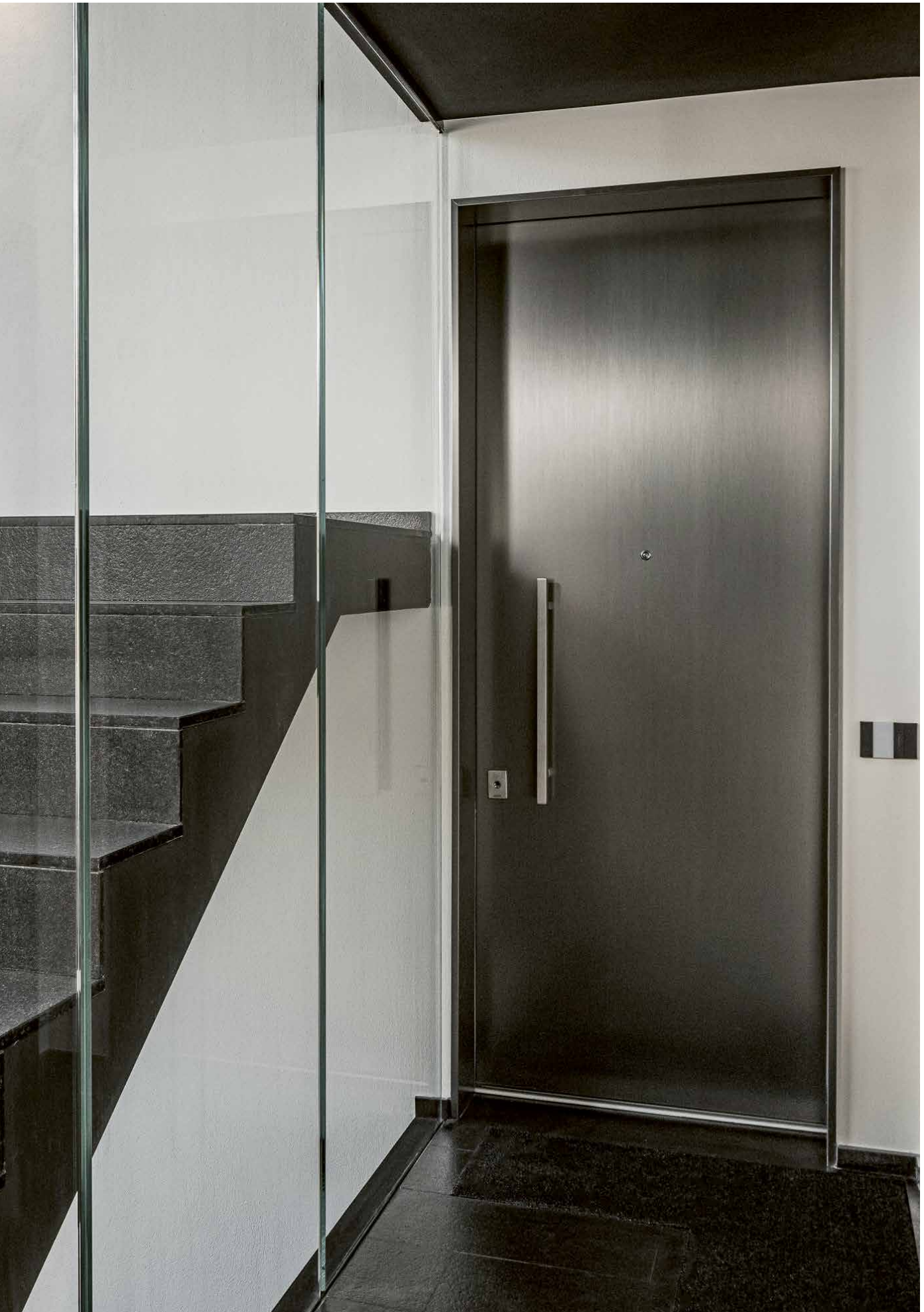




Janus Door
Safety & Comfort Doors

Index

Introduction	4
Relief panels	6
Methacrylate panels	9
Ceramic Panels	12
Sheet Metal Panels	14

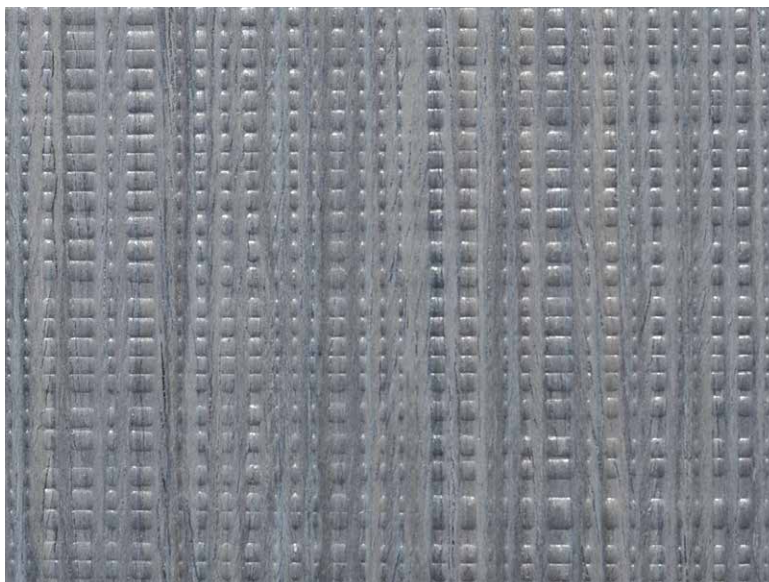


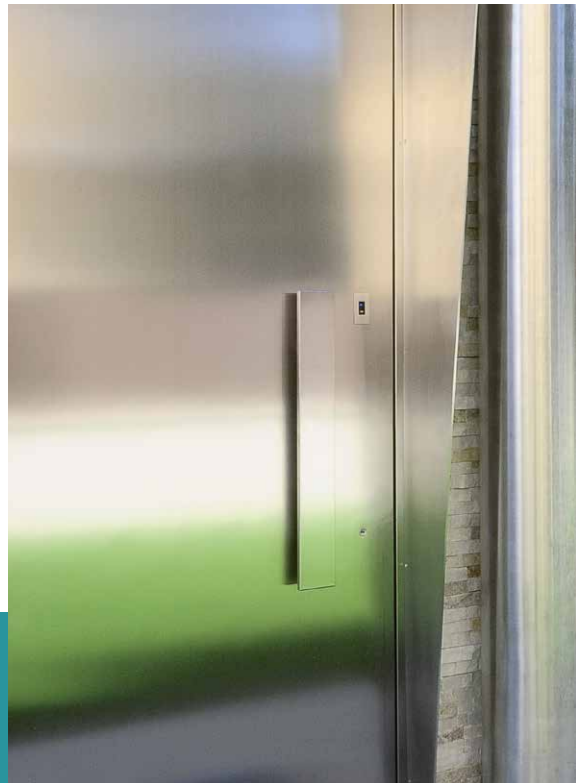
Introduction

Janus armored doors stand out always for elements of elegance, innovation, design and living comfort, as well as for its extraordinary performance safety, certified by the best institutes at European level.

Customizable as desired thanks to the wide range of coverings, available finishes and accessories are built with environmentally friendly materials and guarantee exceptional durability in time.

In this catalog you will find our proposals for special coatings.





Icon explained



SUN COVERINGS

Suitable for exterior armored doors. These are outdoor coverings because they are suitable for all types of exposure to sun, water, humidity and temperature.



HALF-SUN COATINGS

Suitable for exterior armored doors sheltered place. These are coverings which can be placed outside but without direct exposure to weathering. Suitable for porches, sheds and covers.



NON-SUN COATINGS

Suitable for interior doors. It's about interior coverings, not suitable for any type of exposure.



Relief panels

Relief panels in wood veneer precomposed are delicate indicated if you have an interior door. The decorations in relief that characterize this type of covering are perceptible to the touch and are of different depth and style.

Some have one grain horizontal, others vertical or mesh or light ashlar.

Cleaning

It is preferable to clean with a soft cloth; moisten if necessary and dry well. Absolutely avoid cleaning with alcohol or aggressive or grainy detergents.



Type B – White



Type B – Canaletto walnut.



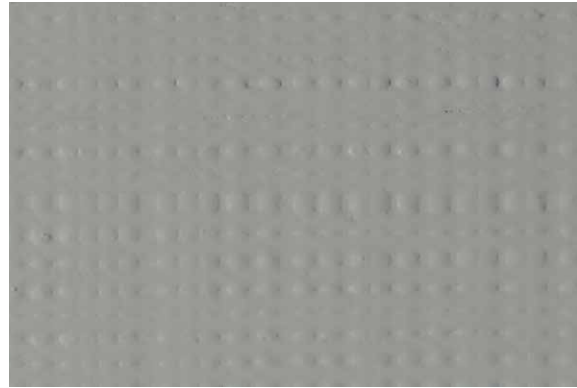
Type B – Wengé



Type B – Oak



Type B – Grey



Type C – White



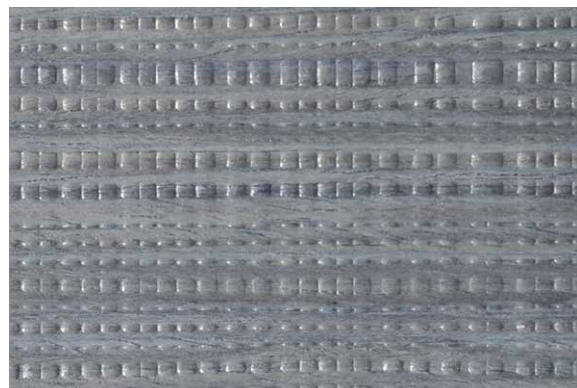
Type C – Canaletto walnut



Type C – Wengé



Type C – Oak



Type C – Grey



Type R – Grey



Hinge side covering with PVC edge in RAL 9006

Maximum dimensions

All dimensions are in millimetres.

		Standard Doors							Klima (Passivhaus) doors					
		Internal panel				External panel			Internal panel			External panel		
Model	Thickness	L max included		H max included		L max included		H max included	L max included		H max included	L max included		H max included
		RC3	RC4	hand-tamped floor		RC3	RC4	with threshold and/or without stop	RC3	RC4		RC3	RC4	
Aluminum coated in RAL color	7 o 10	1100	1190	1460	2470	1100	1200	2480	1100	1180	2480	1100	1200	2480





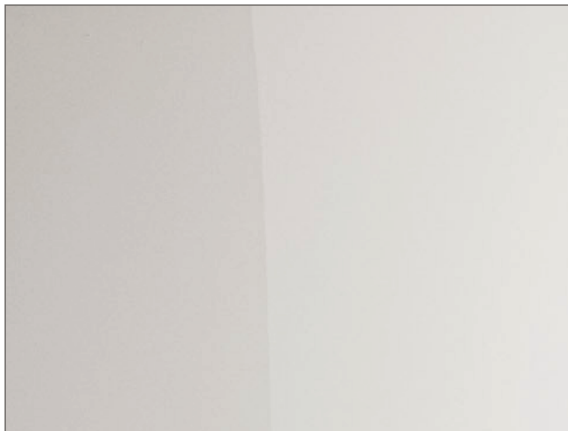
Methacrylate panels

Methacrylate is a plastic material transparent that can be sold in different colors and shades, such as glossy, matte and satin. It is a recyclable material 100% and reusable several times.

It deals with of an interior covering, as the material is not suitable for exposure to weathering. It has good resistance scratch-proof, so you never have to worry again to leave your mark with your keys.

Cleaning

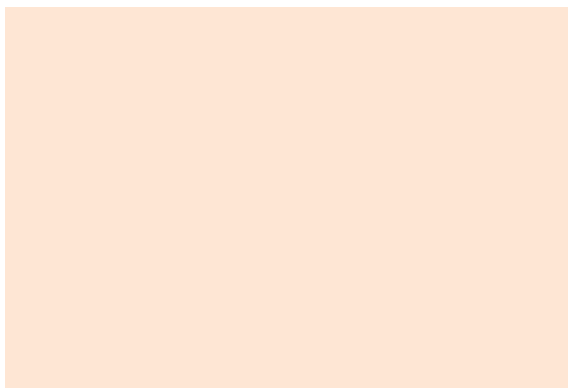
If the panel is only superficially dirty, you can use a cloth dampened with water. In the case of more stubborn stains, use glass cleaner diluted in water. Dry with a soft cloth to avoid caused stains to be created on the surface from humidity. When you do the cleaning though do not use an abrasive sponge!



White V2778 Glossy



Smoke 1658L



Magnolia 73703



Mint 1684L Glossy



Sand



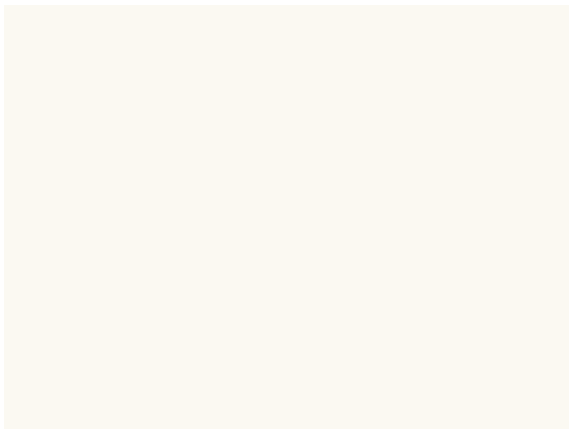
Burnt Wood 1975L Glossy



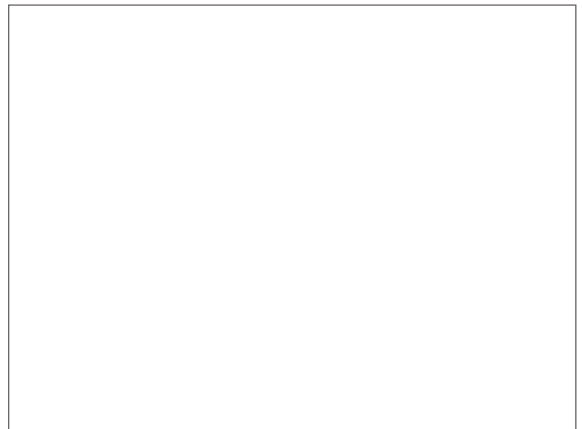
Mirror*



Piano 2016L



Pearl V2892



White 1696L Matte

* Mirror-effect finish

Maximum measurements

The measurements are to be understood in millimetres. The maximum size available is L 1300 X H 2800.

		Standard Doors								Klima (Passivhaus) doors					
		Internal panel				External panel				Internal panel			External panel		
Model	Thickness	L max included		H max included		L max included		H max included		L max included		H max included	L max included		H max included
		RC3	RC4	hand-tamped floor		RC3	RC4	with threshold and/or without stop		RC3	RC4		RC3	RC4	
Aluminum coated in RAL color	7 o 10	1100	1190	1460	2470	1100	1200	2480		1100	1180	2480	1100	1200	2480





Ceramic panels

The ceramic coating is among the most resistant that you can find. It is suitable for your external door because it has excellent resistance to atmospheric agents, even in the event of full exposure in maritime areas.

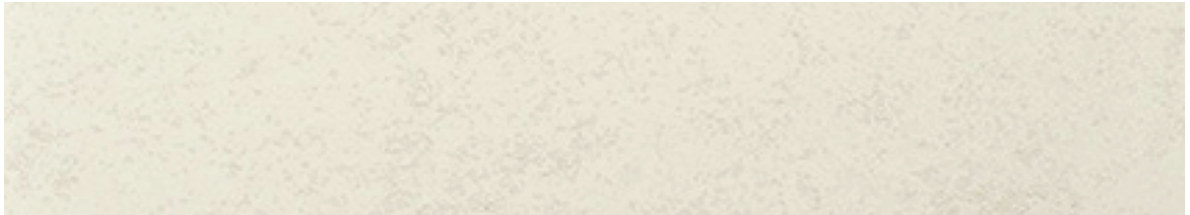
Furthermore, it is very resistant to scratches, perfect for example if you have pets.

Cleaning

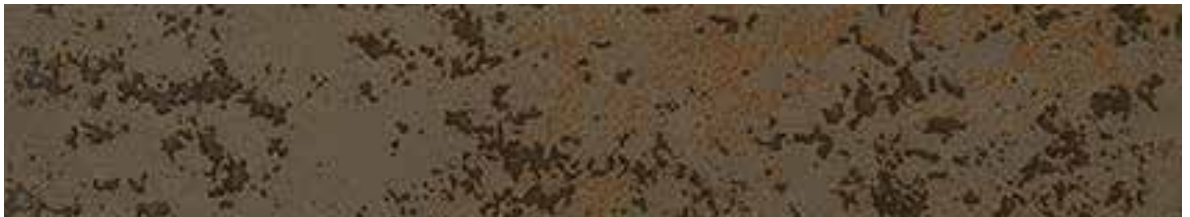
To clean your ceramic panel a cloth and some neutral detergent are sufficient.



Ivory oxide



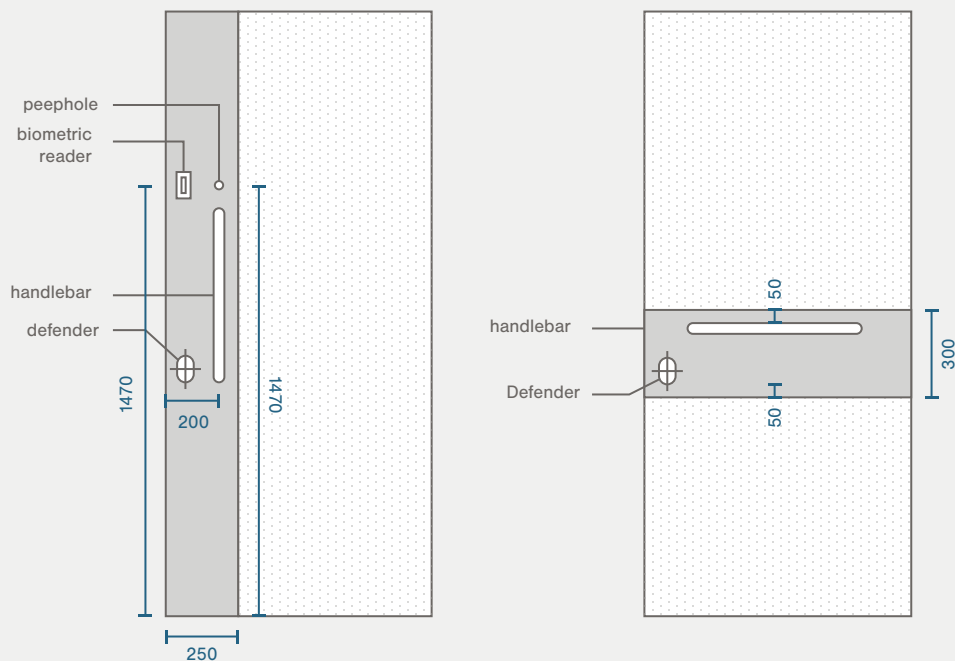
White oxide



Dark brown oxide



Black oxide



Remember: it is never possible to apply the ceramic panel to KLIMA models.

To guarantee the high performance of the armored door, the ceramic panel must include a stainless steel band, horizontal or vertical, on which the holes for the defender, handles, possible peephole and biometric reader.

The rfid reader is not working, therefore this is not possible use cards or tags to open the door.



Sheet Metal Panels

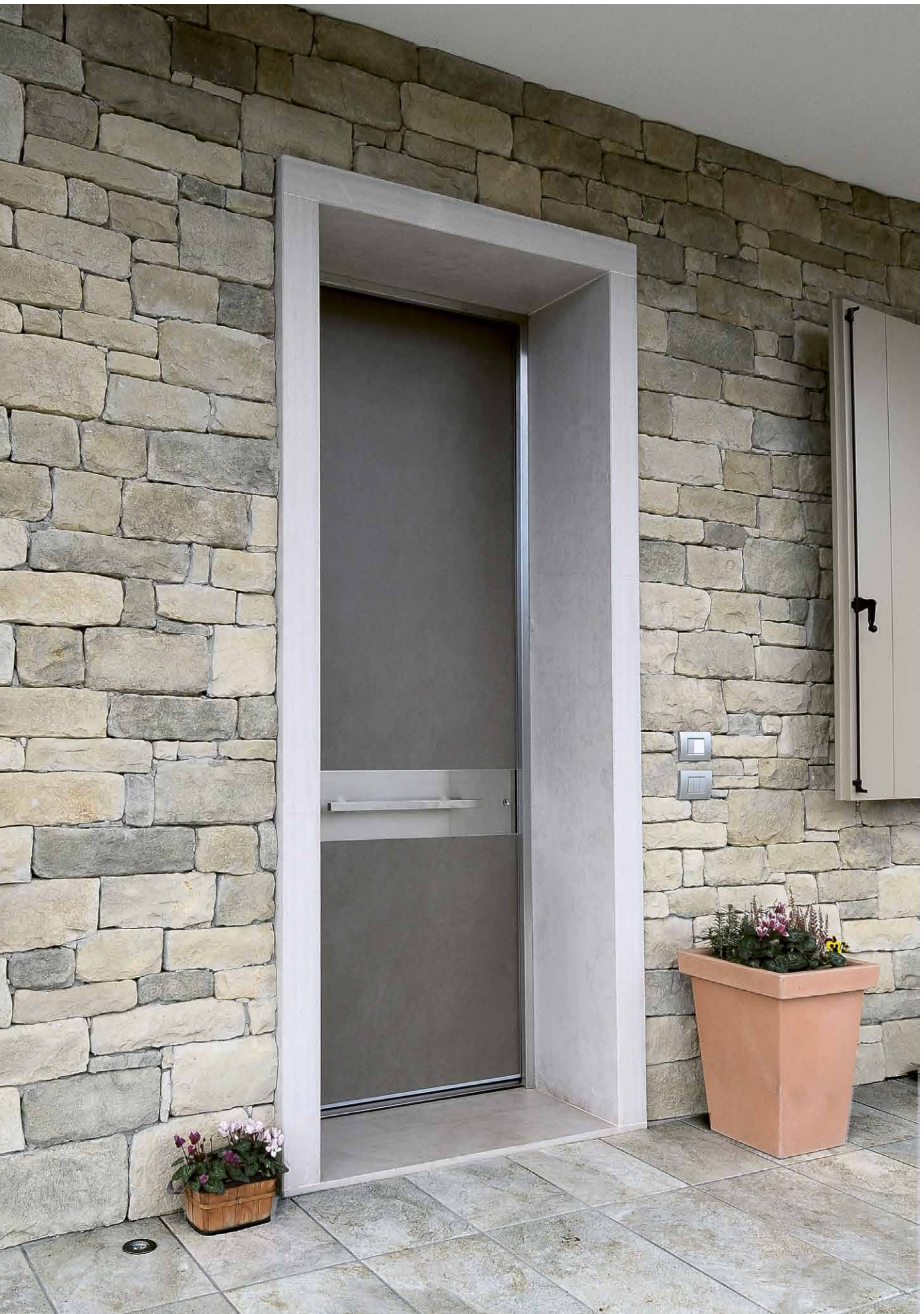
The sheet metal panels are very resistant to weather conditions. You can choose between painted sheet metal panels, ideal for exposure in humid environments and salty fog, or stainless steel-effect satin-finish panels with anti-fingerprint properties.

Remember: The Hidden Reader rfid is not working, therefore it is not possible use tags and tiles to automatic opening.

Cleaning

To clean the sheet metal panel it is sufficient a cloth moistened with water, drying well after the passage to avoid stains.





SAFETY &
COMFORT
DOORS

Janus Door

Brockholes Business Park,
Rock Mill Road, Brockholes,
Holmfirth, HD9 7BN

T. +44 01484 663388

www.burtonsecurity.com
enquiries@burtonsecurity.com