

PREMIUM
SECURITY & HIGH
PERFORMANCE
DOORS

Janus Armoured Security and Fire Doors



Basic Specifications

 **BURTON**
SECURITY

REFINING OUR VISION

What does protection mean for Burton Security?

All our armoured doors have been tested and certified in the laboratory to **ensure maximum protection and security from break-in attempts**. The ability to resist is measured with a combination of static and dynamic loads, and the simulation of burglary attempts implemented with different types of both manual and electric tools.



Burglar-proof security



Fire resistance



Thermal insulation



Sound insulation



Water tightness



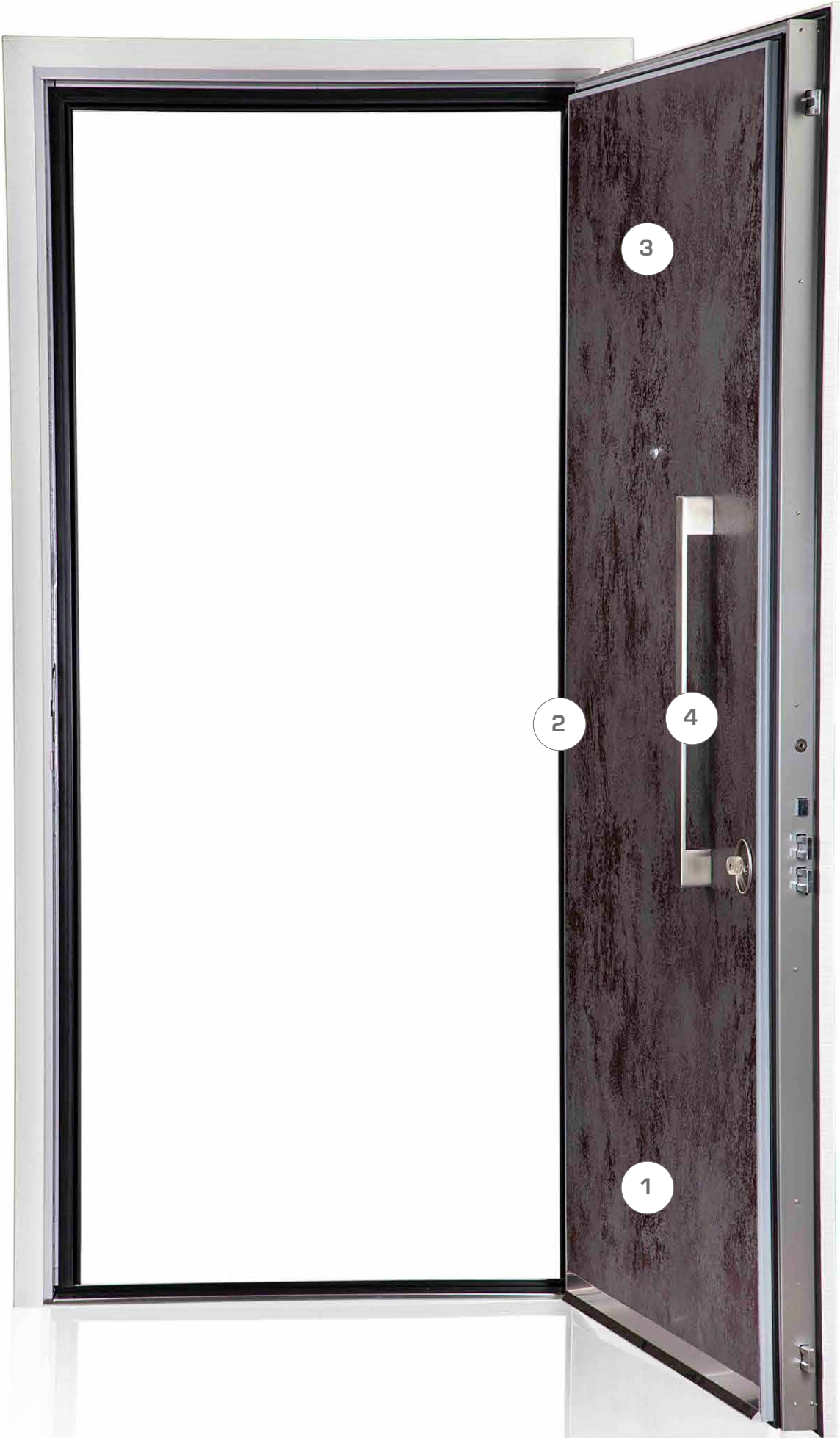
Air tightness



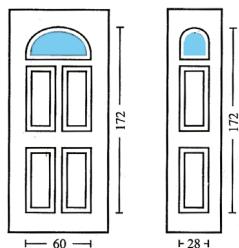
Wind tightness



Longevity



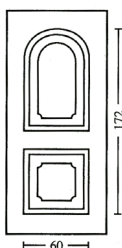
EMBOSSED DESIGNS*



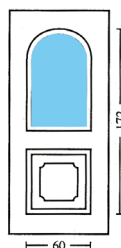
Algenib/K1



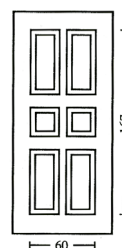
Algenib/KS1



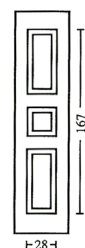
Ikaro/K



Ikaro/K1



Eridano/K



Eridano/KS

1

We offer a variety of models according to the door location, security needs and performance requirements

2

We can supply a huge range of shapes and sizes including single leaf, double leaf, glazed panels, over panels, side panels and arched panels. We offer both inward and outward opening doors

3

We offer hundreds of finishes and colours in a choice or combination of wood, steel, aluminium mineral and ceramic panels. Each door we supply is made to order according to your requirements

4

We have a range of traditional and modern door hardware. Doors can be supplied with fixed or lever handles according to your needs



Aluminum F9



Polished brass



Design Options

If you have a specific request, please speak to us. We have a team of craftsmen based in Yorkshire who can design handmade and unique finishes to your door.



SAFETY AND PROTECTION

Class 3 – This describes the door's performance against burglary attempts. At level 3, testing is undertaken by applying static & dynamic loads as well as undertaking attacks using manual tools such as crowbar, screwdrivers, pliers, etc for a maximum test duration of 20 minutes.

Class 4 – This describes the door's performance against burglary attempts. At level 4, testing is undertaken by applying static & dynamic loads as well as undertaking attacks using manual and electrical tools such as hammer, chisel, axe, bolt cutters, electric drill, etc for a maximum test duration of 30 minutes. Its worth noting that a Class 4 door is at least twice as strong as a Class 3 door, making our Janus 4 & Gold models exceptional value.



FIRE RESISTANCE

The reference values are where E stands for Integrity and I stands for insulation.

The integrity test measures the spread of flame through the door.

The insulation test measures the temperature rise on the protected side of the door.

The number 30, 60, or 120 represents the duration of the test in minutes.

The number 1 or 2 describes two different test and pass criteria, with the number 1 being a more stringent test. Under EI 1 thermocouples for measuring the temperature rises are placed closer to the door edges. Additionally, the allowed temperature rise of the thermocouples placed on the door frame are 180oC rather than 360oC at EI 2. In both standards EI 1 & EI 2 the average temperature rise of 5 fixed thermocouples placed on the door leaf may not exceed 140oC.



ACOUSTIC ISOLATION

It is measured in db Rw and it is the capacity to prevent the passage of noise through the door (sound isolation). The higher the value in the display, the better the sound-isolating power. Its worth noting that this value doubles with each 2.7dB. As an example our Janus Gold with 46dB has twice the sound insulation of our Janus 3 with 43dB. Janus doors offer very high levels of sound insulation compared with the market average.

7



AIR TIGHTNESS

Air permeability is measured in classes from 0 to 4 which indicate the ability to prevent the passage of air through the door. The higher is the classification value, the better it will perform.



WIND TIGHTNESS

Wind resistance is measured in classes from 0 to 5 which indicate the increasing static resistance of the door to strong gusts of wind and even hurricanes. All our external Janus door have a minimum Class 4 meaning that they can withstand a pressure of 1000Pa or equivalent 150km/h and our top level Janus Gold & Platinum can withstand wind speeds of 180km/h.



THERMAL ISOLATION

Often referred to as a U value. The insulation for a complete door and framework is measured in (W / m²K) and it is the capacity to prevent the thermal exchange between two rooms separated by the door. The lower the number, the better the insulation.

The number 0 would mean that no heat is transferred at all. Our Janus range has industry leading U values, with the Gold & Platinum models suitable for use in Passivhaus schemes.



WATER PERMEABILITY

Water tightness is measured in classes from 0 to 9 and indicates the capacity to prevent the passage of pressure water through the reinforced gate door. The higher the classification value, the better the tightness capacity.





Internal Armoured Doors.

9

Our internal armoured door is produced with the best materials, all tested and certified.

They can be perfectly integrated in buildings with style and convenience.

Ideal for apartments, offices and to secure individual rooms in your home.

A Janus Burton Security door embodies excellence when it seamlessly intertwines security and comfort.

Janus 3

Break-in resistance class 3 EN 1627/30

Acoustic insulation -43 dB Rw

Thermal insulation Ud = 1.3W/m²K

Electrogalvanized steel structure

Thermal insulation in compressed mineral wool

Special high performance automatic doorstrip

External seal on frame, **internal seal** on leaf

Defender in special steel class3 anti-pick rating

Security lock geared mechanism activating six bolts with self-centring rectangular latch bolt

Hinges 2 adjustables in 3 directions

Fixed steel bolts 3 with flat profile

Wide-angle spyhole

Veneered or melamine standard panels

Handles F9 finish aluminium

External casing strips in plastified sheet RAL 9006

Frame RAL 9006 or RAL 9010

European cylinder 1+3 keys, according to class WK3

Subframe 3D adjustable in 3 directions

Standard sizes: 80 to 90 x 200 to 210 cm

This model is available with different sizes from standard

OPTIONALS

Security retainer

Metal Hinge covers

Internal casing strips

External casing strips

Cylinder with mastered system

Double side key cylinder

Kit Avantgarde electronic locking system with batteries

Kit Avantgarde Plus electronic locking system with mains power

Kit Avantgarde Pro electronic locking system with mains power

& single action to escape Alarm sensor

Boltwork position sensor

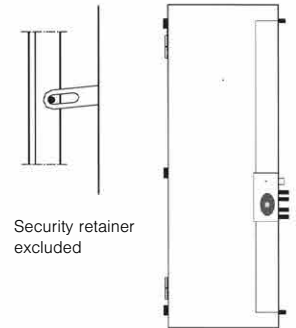
Surface mounted & hidden door closer

European cylinder 1+3 keys, according to class WK4

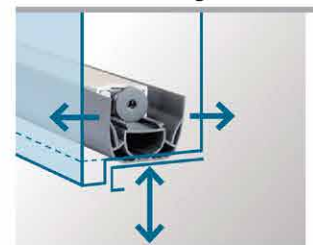
VARIATIONS

Brass handles (polished, polished or satin chrome, bronze finish)

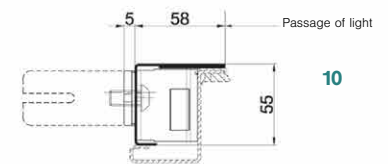
Bullet resistance to FB4 & FB6



Height between 86 and handle 95 cm
compliant including Ministerial
Decree 236 of 14/06/1989
Door handle height 86-95cm



Draft excluder blade + possible stop



Hydraulic overhead door closer
3D subframe

Notes: the handles height is between 85 and 95 cm according to D.M.
236 14/06/1989

Janus 4

Break-in resistance class 4 EN 1627/30

Acoustic insulation -44,8 dB Rw

Thermal insulation $U_d = 1.2W/m^2K$

Electrogalvanized steel structure

Thermal insulation in compressed mineral wool

Special high performance automatic doorstrip

External seal on frame, **internal seal** on leaf

Oval Defender in special steel class4 anti-pick rating

Security lock geared mechanism activating six bolts with self-centring rectangular latch bolt

Hinges 2 adjustables in 3 directions with same handles finish

Fixed steel bolts 3 with flat profile

Wide-angle spyhole Veneered or melamine standard panels

Internal casing strips

External casing strips in plastified sheet RAL 9006

Brass handles (polished, polished or satin chrome, bronze finish)

Frame RAL 9006 or RAL 9010

European cylinder 1+3 keys, according to class WK3

Subframe 3D adjustable in 3 directions

Standard sizes: 80 to 90 x 200 to 210 cm

This model is available with different sizes from standard

OPTIONALS

Security retainer

Metal Hinge covers

Internal casing strips

External casing strips

Cylinder with mastered system

Double side key cylinder

Kit Avantgarde electronic locking system with batteries

Kit Avantgarde Plus electronic locking system with mains power

Kit Avantgarde Pro electronic locking system with mains power

& single action to escape Alarm sensor

Boltwork position sensor

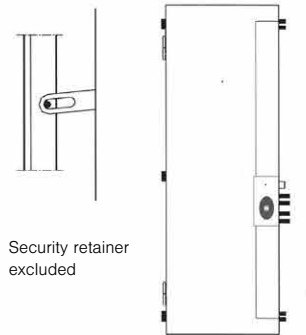
Surface mounted & hidden door closer

European cylinder 1+3 keys, according to class WK4

VARIATIONS

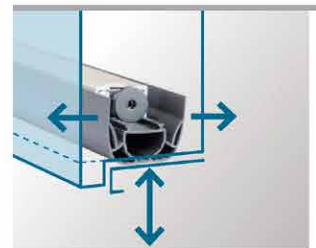
Brass handles (polished, polished or satin chrome, bronze finish)

Bullet resistance to FB4 & FB6

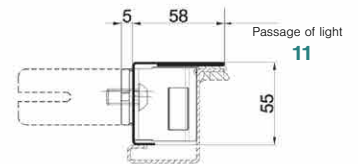


Height between 86 and handle 95 cm
compliant including Ministerial
Decree 236 of Id/06/1989

Door handle height 86-95cm



Draft excluder blade plus possible stop
Automatic door strip



3D subframe

Notes: the handles height is between 85 and 95 cm according to D.M.
236 14/06/1989

Janus Panic

Break-in resistance class 4 EN 1627/30

Acoustic insulation -44,8 dB Rw

Thermal insulation Ud = 1.2W/m²K

Double Electrogalvanized steel structure

Thermal insulation in compressed mineral wool

Special high performance automatic doorstrip

External seal on frame, **internal seal** on leaf

Security retainer

Double oval defender in special steel class4 anti-pick rating

Security lock geared mechanism activating six bolts with self-centring rectangular latch bolt

Hinges 2 adjustables in 3 directions with same handles finish

Fixed steel bolts 3 with flat profile

Wide-angle spyhole

Veneered or melamine standard panels

Internal casing strips

External casing strips in plastified sheet RAL 9006

Brass handles (polished, polished or satin chrome, bronze finish)

Frame RAL 9006 or RAL 9010

Double european cylinder 1+3 keys, according to class WK4

Subframe 3D adjustable in 3 directions

Standard sizes: 80 to 90 x 200 to 210 cm

This model is available with different sizes from standard

OPTIONALS

Security retainer

Cylinder with mastered system

Double side key cylinder

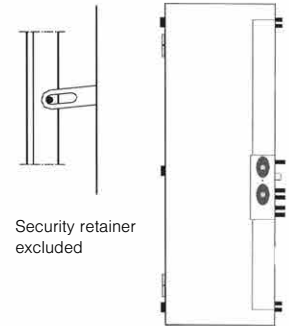
Alarm door position sensor

Boltwork sensor

Bullet resistance to FB4 & FB6

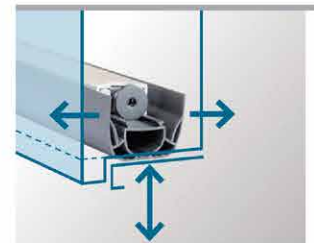
VARIATIONS

European cylinder 1+3 keys, according to class WK4

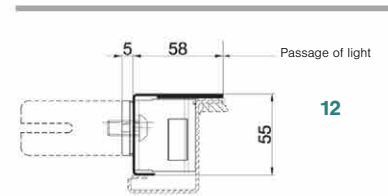


Height between 86 and handle 95 cm
compliant including Ministerial
Decree 236 of Id/06/1989

Door handle height 86-95cm



Draft excluder blade plus possible stop



3D subframe

Janus Fire

El₂ 60 / El₁ 30

Break-in resistance class 3 EN 1627/30

Fire resistance 60' on both sides

Acoustic insulation -43 dB Rw

Thermal insulation Ud = 1.6W/m²K

Electrogalvanized steel structure

Thermal insulation in compressed mineral wool

Special high performance automatic doorstrip

External seal on frame, **internal seal** on leaf

Heat expanding seal

Defender in special steel class3 anti-pick rating

Security lock geared mechanism activating six bolts with self-centring rectangular latch bolt

Hinges 2 adjustables in 3 directions

Fixed steel bolts 3 with flat profile

Wide-angle spyhole

Veneered or melamine standard panels

Handles F9 finish aluminium

Internal casing strips

External casing strips in plastified sheet RAL 9006

Frame RAL 9006 or RAL 9010

European cylinder 1+3 keys, according to class WK3

Subframe 3D adjustable in 3 directions

Standard sizes: 80 to 90 x 200 to 210 cm

Size limitations: max passage size 900x2100mm, not higher dimensions allowed

OPTIONALS

Security retainer

Metal Hinge covers

Cylinder with mastered system (to add to the cost of the cylinder,

Double side key cylinder

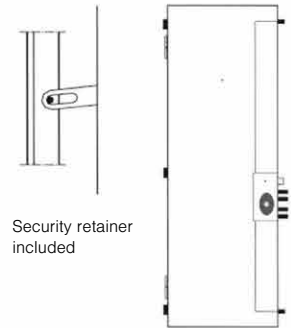
Kit Futura for door automation (only available with external cable)

Surface mounted closer

VARIATIONS

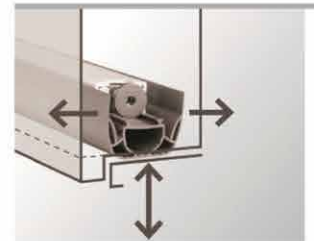
Brass handles (polished, polished or satin chrome, bronze finish)

European cylinder 1+3 keys, according to class WK4



Security retainer included

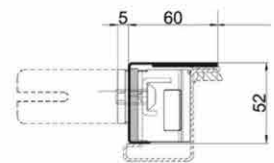
Height between 86 and handle 95 cm compliant including Ministerial Decree 236 of 14/06/1989



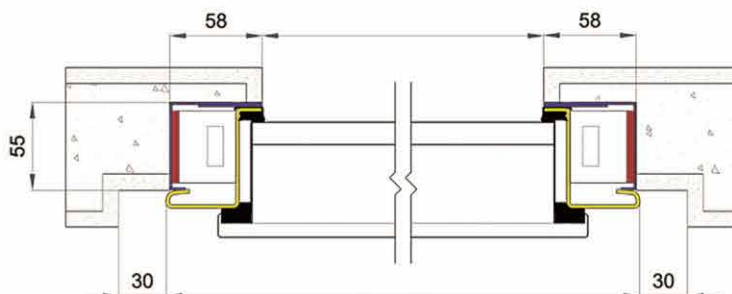
Draft excluder blade + possible stop



Hydraulic overhead door closer



3D subframe



Notes: the handles height is between 85 and 95 cm according to D.M. 236 14/06/1989

Exterior Armoured Doors

Burton Security, exterior armoured doors have unparalleled quality and technological features and are the best performing on the market. They represent the perfect solution for energy-saving buildings and they come in different models and types. European burglar-resistant certifications, acoustic isolation, thermal transmittance, air, water and wind tightness.

A Janus Burton Security door embodies excellence when it seamlessly intertwines security and comfort.



Janus 3 EX

Break-in resistance class 3 EN 1627/30

Acoustic insulation -43 dB Rw

Thermal insulation Ud = 1.0W/m²K

Air tightness class 4

Water tightness class 6A

Wind load resistance class C4

Electrogalvanized steel structure

Thermal insulation in compressed mineral wool

Special high performance automatic doorstrip

Swiss threshold

External seal on frame, **internal seal** on leaf

Defender in special steel class3 anti-pick rating

Security lock geared mechanism activating six bolts with self-centring rectangular latch bolt

Hinges 2 adjustables in 3 directions with same handles finish

Fixed steel bolts 3 with flat profile

Wide-angle spyhole

Veneered or melamine standard panels

Handles F9 finish aluminium

Frame RAL 9006 or RAL 9010

European cylinder 1+3 keys, according to class WK3

Subframe 3D adjustable in 3 directions

Standard sizes: 80 to 90 x 200 to 210 cm

This model is available with different sizes from standard

OPTIONALS

Security retainer

Metal Hinge covers

Internal casing strips

External casing strips

Cylinder with mastered system

Double side key cylinder

Kit Avantgarde electronic locking system with batteries

Kit Avantgarde Plus electronic locking system with mains power

Kit Avantgarde Pro electronic locking system with mains power & single action to escape

Alarm sensor

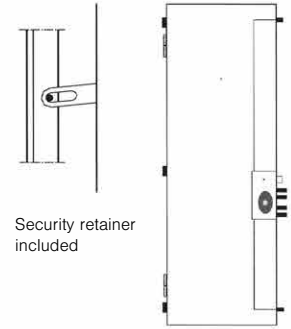
Boltwork position sensor

Surface mounted & hidden door closer

Bullet resistance to FB4 & FB6

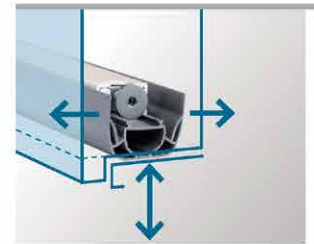
VARIATIONS

Brass handles (polished, polished or satin chrome, bronze finish)



Security retainer included

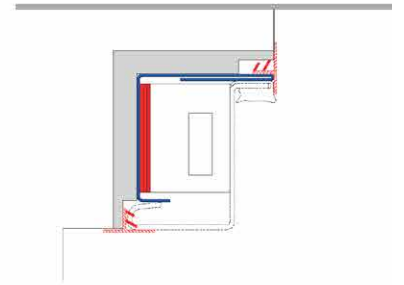
Height between 86 and handle 95 cm compliant including Ministerial Decree 236 of 14/06/1989



Draft excluder blade



Swiss threshold



3D subframe with wraparound insulation

Janus Sunny

GLASS DOOR

Break-in resistance class 3 EN 1627/30

Acoustic insulation -43 dB Rw

Thermal insulation Ud = 1.0W/m²K

Air tightness class 4

Water tightness class 6A

Wind load resistance class C4

Electrogalvanized steel structure

Thermal insulation in compressed mineral wool

Special high performance automatic doorstrip

Swiss threshold

External seal on frame, **internal seal** on leaf

Defender in special steel class3 anti-pick rating

Security lock geared mechanism activating six bolts with self-centring rectangular latch bolt

Hinges 2 adjustables in 3 directions

Fixed steel bolts 3 with flat profile

Wide-angle spyhole

Internal panel pvc film white Ral 9016 finish with grey

External panel mineral panel with pvc film
(finishes available finishes on page)

Internal Handle F9 finish aluminium

Handles F9 finish aluminium

External Handle: Tube H stainless steel fixed handle

Frame RAL 9006 or RAL 9010

Armored glass frosted finish

European cylinder 1+3 keys, according to class WK3

Subframe 3D with enveloping isolation

Standard sizes: 80 to 90 x 200 to 240 cm
without surcharge

OPTIONALS

Security retainer

Metal Hinge covers

Internal casing strips

External casing strips

Cylinder with mastered system (to add to the cost of the cylinder,

Double side key cylinder

Kit Avantgarde electronic locking system with batteries

Kit Avantgarde Plus electronic locking system with mains power

Kit Avantgarde Pro electronic locking system with
mains power & single action to escape

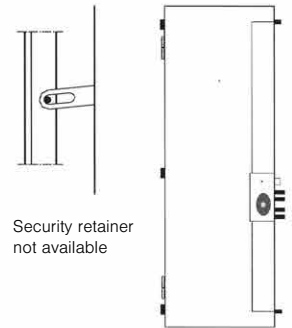
Alarm sensor

Boltwork position sensor

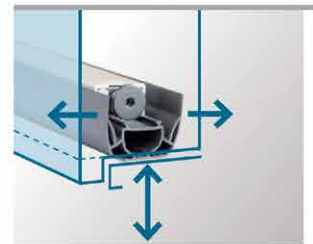
Surface mounted & hidden door closer

VARIATIONS

Brass handles (polished, polished or satin chrome, bronze finish)



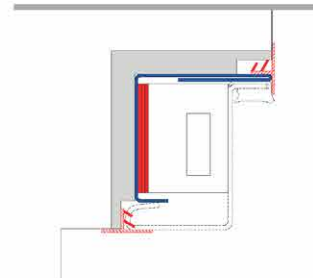
Height between 86 and handle 95 cm
compliant at D.M 236 of 14/06/1989



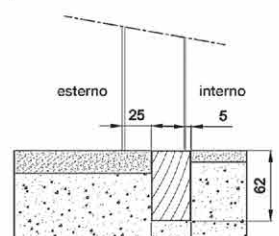
Draft excluder blade



Swiss threshold



3D subframe with wraparound insulation



SUNNY Top Single door only
Not available with reverse armouring



For different subframes and slats
ask for more info to us

Glass Doors



Minimum
dimensions
80x200cm



Maximum
dimensions
90x240cm



Visible glass 29x144cm always centred



Visible glass 20x144cm always centred

Janus 4 Ex

Break-in resistance class 4 EN 1627/30

Acoustic insulation -44,8 dB Rw

Thermal insulation $U_d = 1.2W/m^2K$

Air tightness class 4

Water tightness class 3A

Wind load resistance class C4

Electrogalvanized steel structure

Thermal insulation in compressed mineral wool

Special high performance automatic doorstrip

Swiss threshold

External seal on frame, **internal seal** on leaf

Oval Defender in special steel class4 anti-pick rating

Security lock geared mechanism activating six bolts with self-centring rectangular latch bolt

Hinges 2 adjustables in 3 directions with same handles finish

Fixed steel bolts 3 with flat profile

Wide-angle spyhole

Veneered or melamine standard panels

Internal panel casing strips

External panel mineral panel with pvc film

(finishes available finishes on page)

Internal Handle casing strips in plastified sheet RAL 9006

Brass handles (polished, polished or satin chrome, bronze finish)

External Handle: Tube H stainless steel fixed handle

Frame RAL 9006 or RAL 9010

European cylinder 1+3 keys, according to class WK4

Subframe 3D Energy adjustable in 3 directions, with wood for thermal cut on the floor and perimetral insulation.

Standard sizes: 80 to 90 x 200 to 210 cm

This model is available with different sizes from standard

OPTIONALS

Security retainer

Metal Hinge covers

Internal casing strips

External casing strips

Cylinder with mastered system

Double side key cylinder

Kit Avantgarde electronic locking system with batteries

Kit Avantgarde Plus electronic locking system with mains power

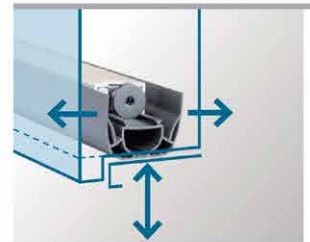
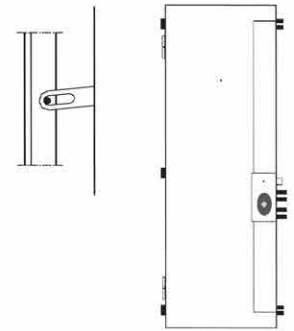
Kit Avantgarde Pro electronic locking system with mains power & single action to escape

Alarm sensor

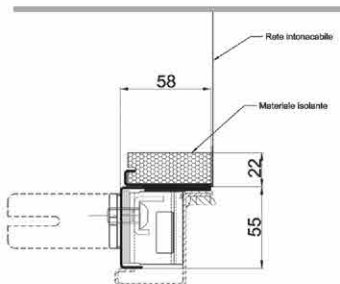
Boltwork position sensor

Surface mounted & hidden door closer

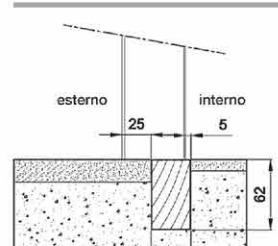
Bullet resistance FB4 & FB6



Swiss threshold



3D Energy subframe with insulation



Thermic cut in the threshold



Janus Gold

Break-in resistance class 4 EN 1627/30

Acoustic insulation -46 dB Rw

Thermal insulation $U_d = 0.60W/m^2K$

Air tightness class 4

Water tightness class 9A

Wind Resistance Class C5

Torsional resistance conforming

Impact resistance conforming

Double electrogalvanized steel structure

Thermal insulation in compressed mineral wool

Special high performance automatic doorstrip

Swiss threshold

External seal on frame, **internal seal** on leaf n°2

Oval Defender in special steel class4 anti-pick rating

Security lock geared mechanism activating four specials bolts with self-centring rectangular latch bolt

3 Wings hinges 2 adjustables in 3 directions with same handles finish

Fixed steel bolts 3 with flat profile

Wide-angle spyhole

Veneered or melamine standard internal panel

Internal panel casing strips

Smooth multilayer wood thickness 9mm in Okoumé, Tanganika or MDF external panel

Internal and external casing strips

Stainless satin steel handles

Frame RAL 9006 or RAL 9010

European cylinder 1+3 keys, according to class WK4

Subframe 3D Energy adjustable in 3 directions, with wood for thermal cut on the floor and perimetral insulation.

Standard sizes: 80 to 90 x 200 to 210 cm

This model is available with different sizes from standard

OPTIONALS

Security retainer

Cylinder with mastered system

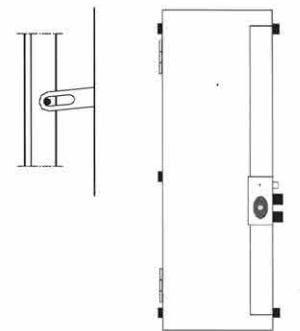
side key cylinder

Futura electronic locking

Alarm sensor

Boltwork position sensor

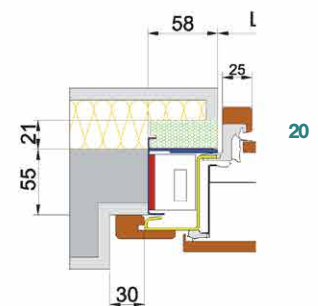
Surface mounted & hidden door closer



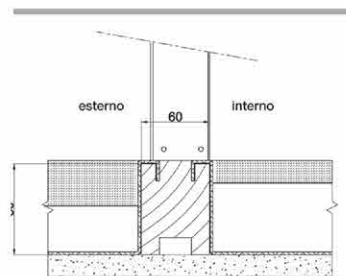
Height between 86 and handle 95 cm
compliant at D.M 236 of 14/06/1989



KLIMA threshold



3D energy threshold



Klima thermal break under threshold



Thermic cut in the threshold

Janus Platinum

Break-in resistance class 3 EN 1627/30

Acoustic insulation -46 dB Rw

Thermal insulation $U_d = 0.54W/m^2K$

Air tightness class 4

Water tightness class 9A

Wind load resistance class C5

Torsional resistance conforming

Impact resistance conforming

Double electrogalvanized steel structure

Thermal insulation in compressed mineral wool

Special high performance automatic doorstrip

Thermic threshold

External seal on frame, **internal seal** on leaf n°2

Oval Defender in special steel class4 anti-pick rating

Security lock geared mechanism activating four specials bolts with self-centring rectangular latch bolt

3 Wings hinges 2 adjustables in 3 directions with same handles finish

Fixed steel bolts 3 with flat profile

Wide-angle spyhole

Veneered or melamine standard internal panel

Smooth multilayer wood thickness 9mm in Okoumé, Tanganika or MDF external panel

Internal and external casing strips

Stainless satin steel handles

Frame RAL 9006 or RAL 9010

European cylinder 1+3 keys, according to class WK4

Subframe 3D Energy adjustable in 3 directions, with wood for thermal cut on the floor and perimetral insulation.

Standard sizes: 80 to 90 x 200 to 210 cm

This model is available with different sizes from standard

OPTIONALS

Security retainer

Cylinder with mastered system

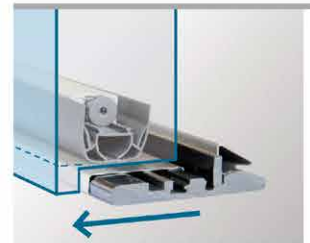
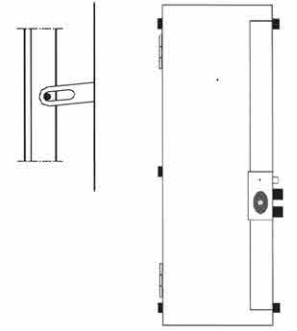
side key cylinder

Futura electronic locking

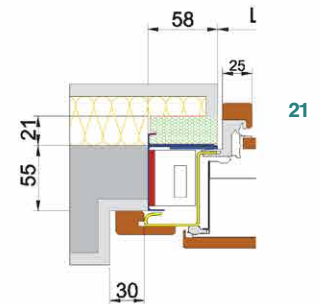
Alarm sensor

Boltwork position sensor

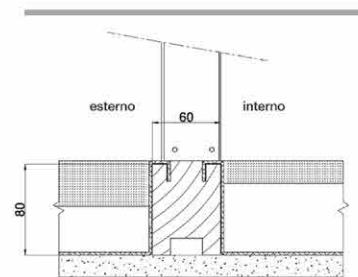
Surface mounted & hidden door closer



KLIMA theshold



3D energy threshold



Klima thermal break under threshold



Thermic cut in the threshold



Access Control for Janus Doors

Discover how the Avantgarde Kit can simplify and enhance your daily life.

Our cutting edge technologies allow you to manage access to your home in a secure, flexible and convenient way.

No more keys, no more hassles.

Kit Avantgarde

The Avantgarde Kit was developed to automate the locking and unlocking of Janus security doors, the result of a decade-long collaboration with ISEO.

This automation kit, specifically designed for Janus doors, combines the technologies of both companies to deliver an innovative solution.

The Avantgarde system can be integrated into Janus armoured doors, enhancing their security with the most advanced automation, control, and management features currently available for entrance doors.

The innovative Avantgarde Kit can be installed on:

Janus 3, 4, 3ex, 4ex & Sunny models.

23

Components common to all versions of the Avantgarde Kit



Special flat bolts



Door position sensor
& automatic locking



Programming via
card or smartphone



Bluetooth communication
with the ISEO App

When the door has an external aluminum panel, the use of RFID technology requires additional accessories, namely: ISEO keypad on the door leaf (included in the B.S.A. KIT), or a MULLION wall-mounted keypad.

Battery Stand Alone

🏠 Residential use



Internal Single Action Lock



Battery-powered



Keypad mounted on the door leaf with RFID reader

PLUS

🏠 Residential use
🏢 Commercial use



Internal push to exit button with manual override



Mains power supply



RFID reader



Compatible with external opening commands from third-party devices such as intercoms, home automation systems, keypads, and more.

PRO

🏠 Residential use
🏢 Commercial use
🚗 For hospitality environments



Internal Single Action Lock



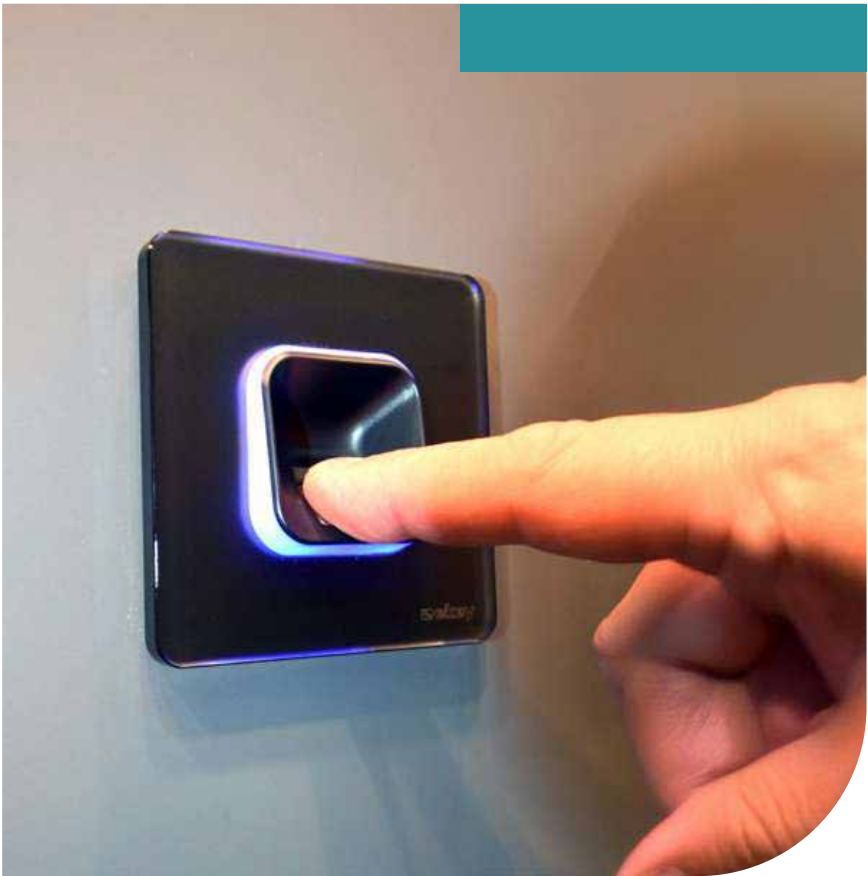
Mains power supply



RFID reader



Compatible with external opening commands from third-party devices such as intercoms, home automation systems, keypads, and more.



Kit Avantgarde PLUS

Automated system for security doors with external power and control integration

The Avantgarde Plus Kit is powered by mains electrics. Thanks to the dedicated ISEO app, numerous events can be monitored, including door opening and many other conditions. The Avantgarde Plus Kit can be complemented with accessories such as a biometric reader and keypad, and can interact with home automation systems, as well as any external command to the door. From the inside, the door can be opened using a button or a mechanical key or thumb turn.

What's included in the Avantgarde PLUS Kit

- Electronic lock with automatic double locking (no 'Single Action' function)
- Special flat bolts designed to enhance automatic locking performance
- Magnetic sensor to activate automatic locking
- Power supply via mains connection (24VDC adapter provided), with a standard 2.5-meter cable.

Configuration using Master card and smartphone

Bluetooth communication with a maximum range of 10 meters via smartphone through the ISEO Argo App, which allows full lock management (for example: managing up to 300 users, access control/event log, activation and management of time slots, temporary user activation, lock status monitoring, office mode activation, etc.).

Inside command through an illuminated metal push button mounted on the door leaf

External door control via smartphone and external connections (intercoms, home automation systems, wall-mounted devices, cards, and transponders)

AVAILABLE OPTIONS



Biometric readers mounted on the door leaf and wall



ISEO keypad installed on the door leaf, enabling opening via RFID and cards



Backlit glass keypad



Wall-mounted stainless steel keypad



MULLION-format keypad for RFID and access card opening



Gateway: monitor and programme your lock remotely opening

The Avantgarde PLUS Kit is not compatible with:

- Security chain
- Slim mounting subframe

Kit Avantgarde PRO

Automated system for security doors with external power and control integration

The Avantgarde Plus Pro is powered by mains electrics. Thanks to the dedicated app, numerous events can be monitored, including door opening and various other conditions. The Avantgarde Pro Kit can be enhanced with accessories such as a biometric reader and keypad, and can interact with home automation systems as well as any external command to the door. From the inside, the door opens simply by operating the handle (Single Action).

What's included in the Avantgarde PRO Kit

Electronic lock with automatic two-bolt locking and 'Single Action' function, enabling complete unlocking by pressing down the handle.

Special flat bolts designed to enhance automatic locking performance

Magnetic sensor to activate automatic locking

Power supply via mains connection (24VDC adapter provided), with a standard 2.5-meter cable.

Configuration using Master card and smartphone

Bluetooth communication with a maximum range of 10 meters via smartphone through the ISEO Argo App, which allows full lock management (for example: managing up to 300 users, access control/event log, activation and management of time slots, temporary user activation, lock status monitoring, office mode activation, etc.).

Internal operation: release of all bolts by pressing down the handle ('Single Action' function)

External operation of the door via smartphone and third-party systems such as intercoms, home automation, wall devices, cards, and transponders

The Avantgarde PRO Kit is not compatible with:

- Security chain
- Slim mounting subframe
- External handle
- Disabling the 'Single Action' function is not possible.

AVAILABLE OPTIONS



Biometric readers mounted on the door leaf and wall



ISEO keypad installed on the door leaf, enabling opening via RFID and cards



Backlit glass keypad



Wall-mounted stainless steel keypad



MULLION-format keypad for RFID and access card opening



Gateway: monitor and programme your lock remotely opening



Kit Avantgarde B.S.A.

Battery Stand-Alone – Integrated power automation system for security doors

The electronic opening of the door, including the movement of the bolts, is fully controlled via a numeric keypad or, Bluetooth through a dedicated app installed on your smartphone.

The locking of the bolts is automatic, and mechanical unlocking from the inside is performed simply by lowering the handle, even in the absence of electrical power.

This also functions as an emergency exit system (Single Action) thanks to the bolt retraction mechanism.

The electronic lock is powered by 6 x D batteries. The power consumption is extremely low and therefore a set of good quality batteries can give up to 20,000 openings.

The battery level can be monitored via the Argo phone App.

What's included in the Avantgarde B.S.A. Kit

Electronic lock with automatic double locking and 'Single Action' function, allowing all bolts to be released by lowering the handle.

Special flat bolts designed to enhance automatic locking performance

Magnetic sensor to activate automatic locking

Battery-powered (6 type D batteries) with an estimated lifespan of approximately 20,000 openings.

Configuration using Master card and smartphone

Bluetooth communication with a maximum range of 10 meters via smartphone through the ISEO Argo App, which allows management of all lock functions (for example: management of up to 300 users, access control/event log, activation and management of time slots, temporary user activation, lock status monitoring, office mode activation, sending opening invitations via email, etc.).

Internal operation: release of bolts by pressing down the handle ('Single Action' function).

External control via numeric keypad with Mifare RFID reader and Bluetooth, allowing opening with user cards, key fob tags, and smartphones.



'Single Action' function, allowing all bolts to be released by lowering the handle.



ISEO numeric keypad mounted on the door leaf with integrated external RFID reader and stainless steel frame finish.

AVAILABLE OPTIONS



Gateway: monitor and programme your lock remotely

27

The Avantgarde B.S.A. Kit is not compatible with:

- Additional control accessories (inter-coms, biometric devices, 3rd party keypads, etc.) and Slim subframe;
- Heavy-duty applications such as: offices, clinics, emergency exits, etc.;
- Security chain
- Disabling the 'Single Action' function is not possible.



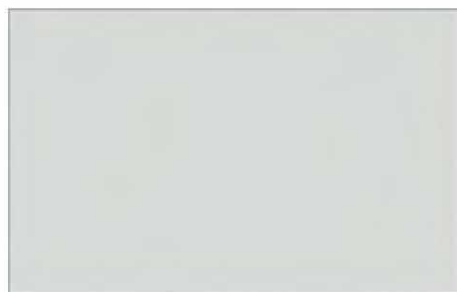
04

www.burtonsecurity.com

Coloured Glass



Standard Panels



MDF laccato Ral 9 mm



Tanganika naturale 9 mm
Tanganika naturale 14 mm



Tanganika chiaro 9 mm
Tanganika chiaro 14 mm



Tanganika medio 9 mm
Tanganika medio 16 mm



Tanganika scuro 9 mm
Tanganika scuro 14 mm



Okumè naturale 9 mm
Okumè naturale 14 mm

30



Okumè chiaro 9 mm
Okumè chiaro 14 mm



Okumè medio 9 mm
Okumè medio 14 mm



Okumè scuro 9 mm
Okumè scuro 14 mm



Rovere naturale 14 mm



Rovere chiaro 14 mm



Rovere medio 14 mm

Standard Panels



Rovere scuro



Douglass naturale



Douglass chiaro



Douglass medio



Douglass scuro



Yellow Pine nat.

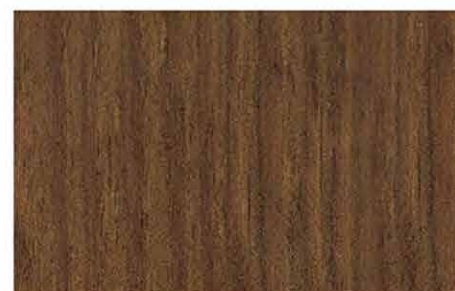
31



Yellow Pine chiaro 16 mm



Yellow Pine medio



Yellow Pine scuro



Larice naturale



Larice chiaro



Larice medio

Standard Panels



Larice scuro



Faggio naturale



Faggio chiaro



Faggio medio



Faggio scuro



Abete naturale

32



Abete chiaro



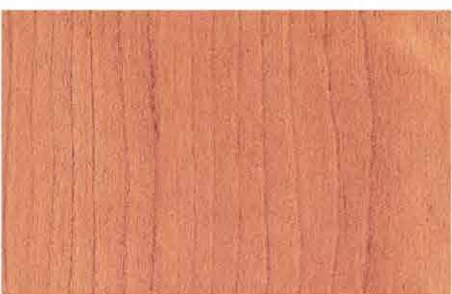
Abete medio



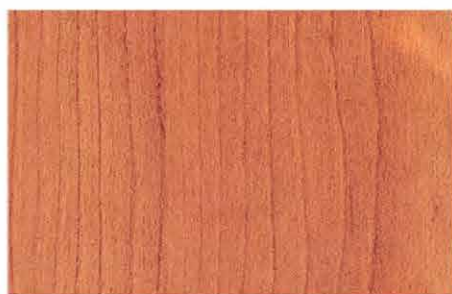
Abete scuro



Ciliegio naturale



Ciliegio chiaro



Ciliegio medio

Types of Pantographed Panels



F1 - di serie se non è specif. la sez.



F2



FS3



F3



F4



FS5



F5



FR



FS6



FS1



FS4



FS7



FS10 - Finitura d'acciaio da 7mm



FS8 - Tondo da 6mm in acciaio



FS9 - Tondo da 12mm in acciaio

Types of Pantographed Panels



P0



P1



P3



P5



P9



P11



P13



P15



P17



P19



P21



P23

Types of Pantographed Panels



P24



P25



P27



P29



P31



P33



P35



P37



P39



P41



P43



P45

Types of Pantographed Panels



P47



P49



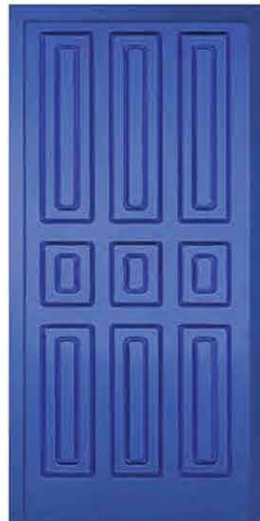
P51



P53



P55



P57



P59



P61



P63



P65



P67



P69

Types of Pantographed Panels



P71



P73



P75



P77



P79



P81



P83



P85



P87



P89



P91



P93

Types of Pantographed Panels



P95



P97



P99



P101



P103



P105



P107



P109



P111



P113



P115



P117

Types of Pantographed Panels



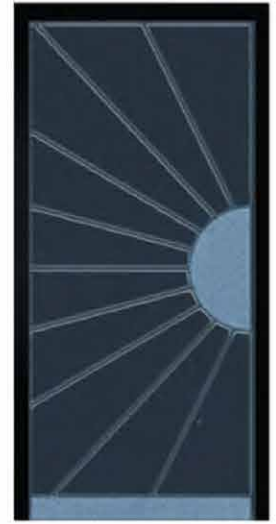
P119



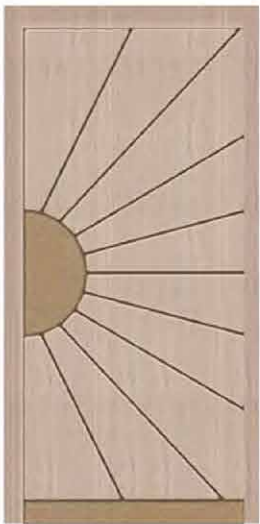
P120 S



P120 D



P121 S



P121 D



P122



P151



P152



P154



P155



P156



P157

Types of Pantographed Panels



P158



P159



P160



P161



P162



P164



P165



P166



P167



P168



P169



P170

Types of Pantographed Panels



P171



P172



P173



P174



P175



P176



P177



P178



P179



P180



P181

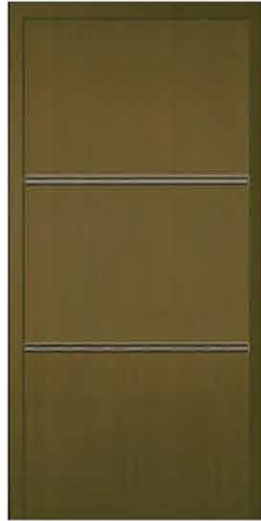


P182

Types of Pantographed Panels



P183



P184



P196



P197



DS10



DS01- D DS01- S



DS02



DS03



DS04



DS06



DS07



DS08

Types of Pantographed Panels



DS020



DS021



DS022



DS023



NE



NF



NG



NH



NI



NL



NM



NB

Types of Pantographed Sunny



NQ



PV6



PV7



PV17L



PV17P



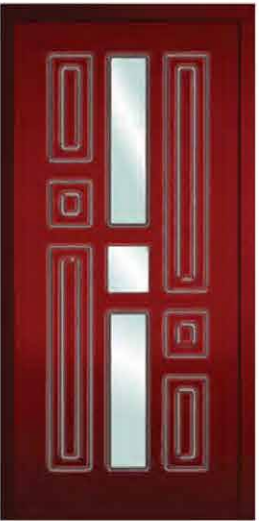
PV17R



PV19P



PV23



PV24



PV25



PV29



PV31

Types of Pantographed Sunny



PV33



PV35



PV39



PV45L



PV47



PV51L



PV52



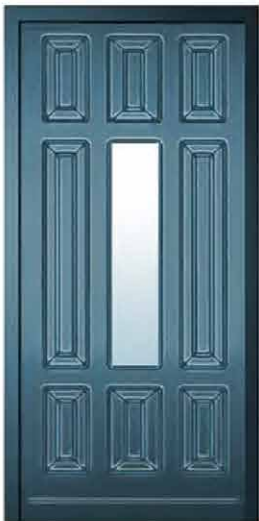
PV57



PV58



PV85



PV87



PV91P

Types of Pantographed Sunny



PV93



PV97L



PV101



PV107



PV109L



PV111L



PV113P



PV115



PV117



PV119P



PV121

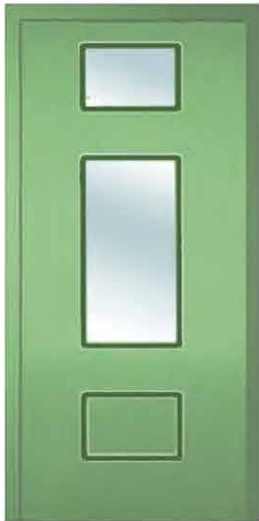


PV122

Types of Pantographed Sunny



PV124



PV125



PV126



PV127



PV128



PV129



PV130



PV131



PV132



PV133



PV134



PV135

Types of Pantographed Sunny



PV136



PV138



PV139



PV140



Pv141



PV142



PV143



PV144



PV145



PV146



PV151



PV158

Types of Pantographed Sunny



PV161



PV162



P184



PV173 D/S



PV175



PV176



PV120



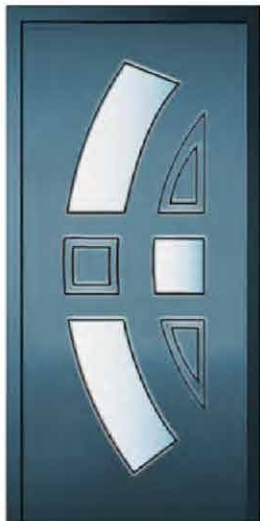
PV163 D/S



PV164



PV147



PV148



PV149

Types of Pantographed Sunny



PV150



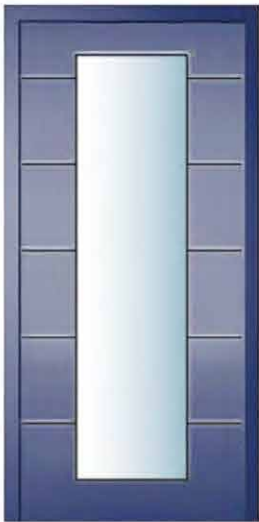
PV177



P178



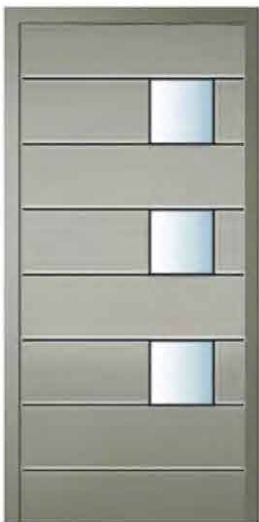
PV179



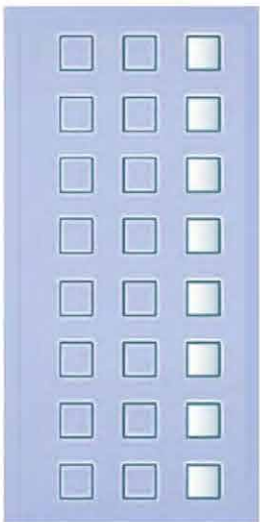
PV179-2



PV180



PV181



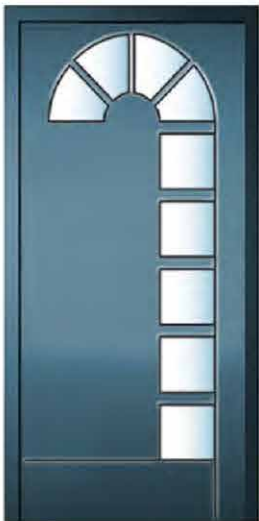
PV182



PV183



PV184

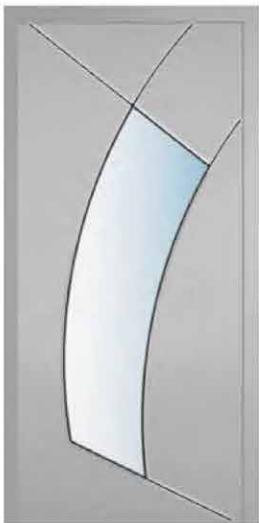


PV185



PV186

Types of Pantographed Arco Panels



PV187



AP159



AP161



AP52



AP162



AP19



AP160



AP190



AP105



AP107



AP123



AP109

Types of Pantographed Arco Panels



AP184



AP185



AP75



AP89



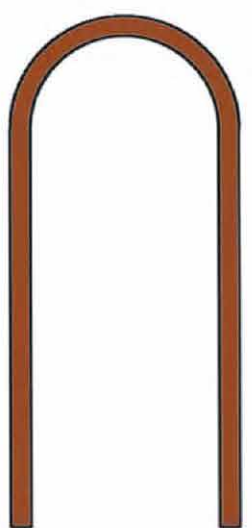
AP67



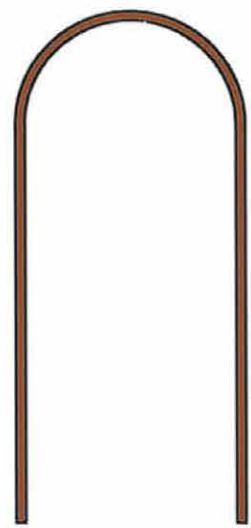
AP69



AP170



CORNICI INT. 50X18



CORNICI EST. 30X12



PREMIUM
SECURITY & HIGH
PERFORMANCE
DOORS

Janus Armoured Security and Fire Doors

Brockholes Business Park,
Rock Mill Road, Brockholes,
Holmfirth, HD9 7BN

T. +44 01484 663388

www.burtonsecurity.com
enquiries@burtonsecurity.com