



Contents

04 About Burton Security

- Your Trusted Global Partner

05 Our Values

- Our Mission

06 Independently Certified & Tested to the Limit

- Security Classes & Insurance Cover
- BRE & LPCB
- ECB-S

09 Modular Vault Rooms

- The Advantages at a Glance
- Model Overview
- 10 Steps to your Individual Vault Room
- Delivery & Installation
- More Equipment

16 Vault Doors

- Types Of Vault Doors
- Security & Features of Vault Doors
- Day Gates
- Standard Locks For Vault Doors

21 Automated Vault Doors

24 Additional Security Products

- Armoured Doors
- Window Security
- Security Walling
- Access Control
- Counters & Screens
- Interlocking PODs
- Bullet Resistant Solutions

Welcome
to Burton Security

Do you have any questions?

Feel free to contact our expert team.

We are happy to help you!



+44 (0) 1484 663388



enquiries@burtonsecurity.com



Your Trusted Global Partner in **Physical Security**

With 35 years' experience in the Physical Security sector, Burton Security is your trusted partner and specialist for vault rooms and safe deposit boxes.

With customers in the UK, Europe, the Middle East, Africa and Asia we have a truly global outlook and a wealth of experience delivering high security, tailor made solutions for our customers.



Our Values, **Our Mission**

We have the values of a family business, looking after our customers, our staff and our local environment. **We are proud of our Yorkshire heritage**, whilst retaining a global outlook.

First and foremost, our mission is to deliver **Physical Security** to protect people, assets and the most prized possessions of our clients.

We believe in independent testing and certification of our products to UK & European standards. This is the best way to deliver the highest levels of proven security. We are also passionate about giving the customer what they want and finding the right solutions to their needs. **The result is that we have become specialists in customised and tailor made solutions.**



Independently Certified & **Tested to the Limit**

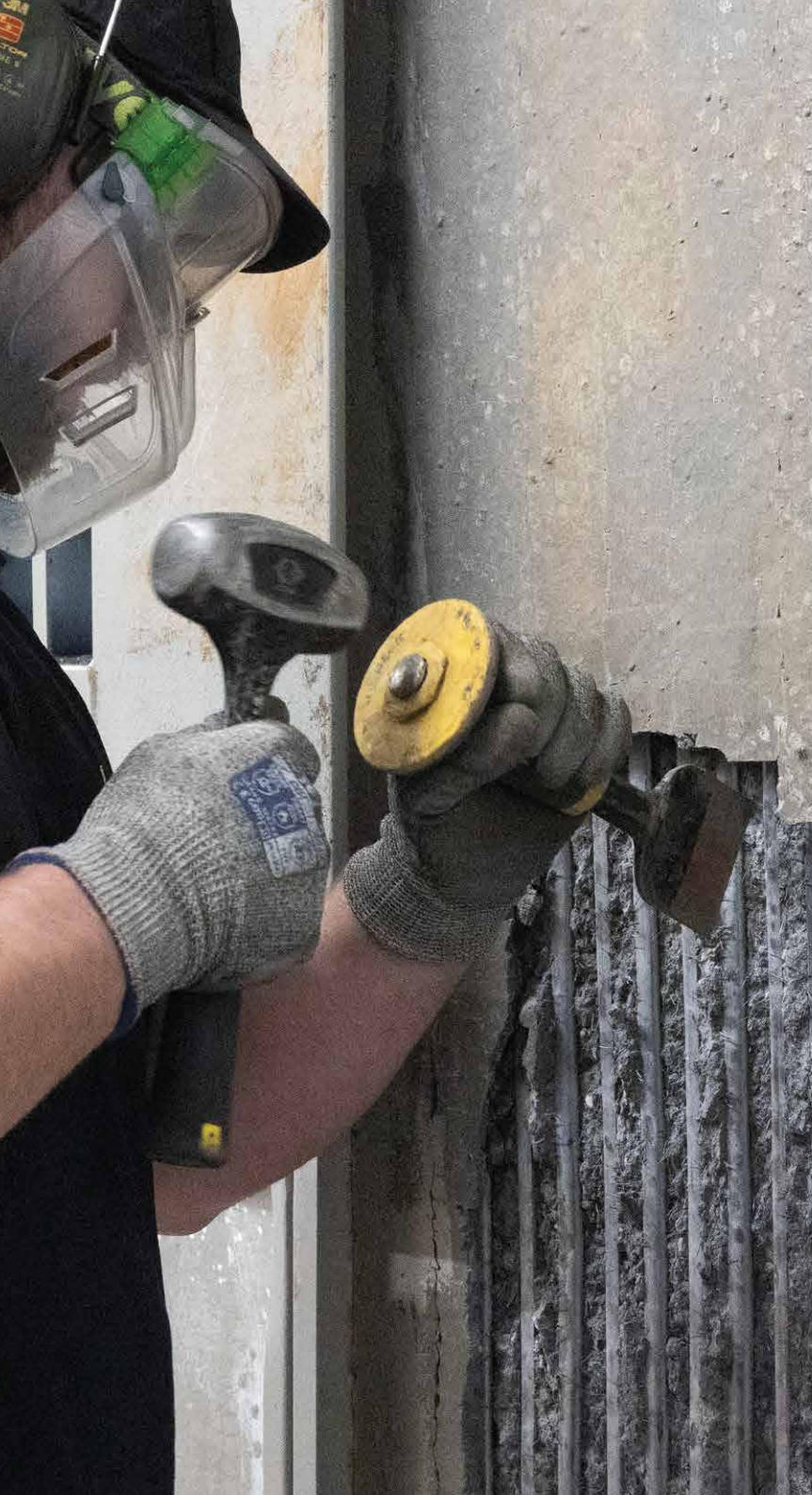
Burton Security is passionate about the value and need of independent testing and certification. The UK and Europe lead the way with standards in our industry and we therefore support the use of EN1143-1 and LPS1175 for vaults and secure rooms. We only work with the most reputable of test and certification bodies, ECBS and BRE.

Our certified vault rooms and vault doors offer the optimum of protection. We offer a wide range of security levels right to the very highest grade possible in the world today.



Burton Security & our supply chain are ISO9001 compliant.

From development and production through to customer service, the standard-compliant system ensures that all products delivered are of the same quality.



BRE & LPCB Building Research Establishment & Loss Prevention Certification Board



LPS1175 is the pre-eminent standard for physical security products in the UK. Used by Banks, Businesses, Critical Infrastructure and Government, it covers all elements of a building, including security walling and secure rooms. The LPCB mark not only tells you that the product has been successfully tested, but that the production is audited to ensure that real world production, matches the tested model.

www.redbooklive.com

ECB-S – European Certification Board - Security System



ECB-S is a globally recognized certification body for security products. The ECB-S label confirms the compliance of Burton Security products with the EN1143-1 European standard for burglary protection. It can be easily argued that EN1143-1 is the world's best and leading standard for vault rooms and safes. ECBS certification also includes regular factory audits to give you the assurance that the quality and security of your vault, matches exactly the models that were tested to EN1143-1.

www.ecb-s.com

Security classes	Attack time & tool classes	LPCB - BRE
Biovault E10	10 minutes/E tools	LPS1175
Orthrus F10	10 minutes/F tools	LPS1175
Orthrus G5	5 minutes/G tools	LPS1175

Security classes	RU-resistance units	Insurance rates	ECB-S	Optional Fire Rating
Grade II	80	175.000	GBP Valuables	
Grade III	120	350.000	GBP Valuables	
Grade IV	180	600.000	GBP Valuables	
Grade V	270	1,000,000	GBP Valuables (EX)	
Grade VI	400	1,500,000	GBP Valuables (EX)	EI2 60/120
Grade VIII	825	4,000,000	GBP Valuables (EX) (CD)	EI2 60/120
Grade X	1350	10.000.000	GBP Valuables (EX) (CD)	EI2 60/120
Grade XI	2000	15.000.000	GBP Valuables (EX) (CD)	EI2 60/120
Grade XII	3000	22.500.000	GBP Valuables (EX) (CD)	EI2 60/120
Grade XIII	4500	35.000.000	GBP Valuables (EX) (CD)	EI2 60/120

LPS1175 :

Products are attacked with defined tool lists from A-H. The higher the tool list, the more powerful and effective they are. From tool list A-E there is a one person attack. From F-H two testers may attack simultaneously. Scores are given in the contact time to gain access from 1-20 minutes. Its worth noting that the total real world attack time is likely to be significantly longer than laboratory contact time.

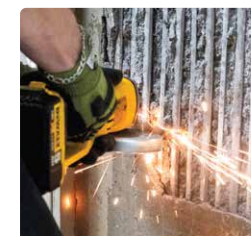
RU: Resistance Units

As part of EN1143-1 security grades are given according to the number of resistance units (RU) scored during the test. Resistance Units are determined in an objective and reproducible test in which the product is attacked using a combination of mechanical, powered and thermal tools. Depending on the power of the tools used and the time taken to gain access a score is given in RU.

CD: Additional protection against core drills

EX: Additional protection against attacks with explosives

FIRE RATING: On request additional fire protection can be added to EN 1634-1. The protection will stop both the penetration of flames (E) and of heat (I). You can choose from 60 minutes or 120 minutes according to your requirements.



Modular Vault Rooms

LPS1175 E10, F10, G5

EN1143-1 Grade II- XIII EX CD



The Advantages at a Glance



Decades of experience

For more than 35 years, Burton Security has been a supplier to financial institutions, a wide range of commercial enterprises as well as public authorities, pharmaceutical companies and private individuals. We do not limit our business to specific sectors or geographical areas - Burton Security is an internationally established brand that you can rely on.



All resistance grades

Depending on your protection requirements, you can choose from all the resistance grades available on the market for your vault.



More usable capacity

Our concrete technology allows us to produce the thinnest walls on the market, whilst retaining the highest levels of security. This means more internal space and often less cost and lower overall weight. Orthrus & Biovault walls are between 27mm-70mm, compared to an industry average of 100mm. Cerberus walls are typically 75% thinner than cast in situ vault rooms.



Everything from a single source

Vault rooms, vault doors, deposit boxes, deposit box management software, access control, interlocks, external and internal security doors, window security, secure lobbies, counters and screens. - everything from a single source for the effortless implementation of your project.



Flexibility & Customisations

All our vault rooms are made to order, to the exact size and shape that you need. We have in house CAD & R&D engineers who can help implement your requests. We are one of the most accommodating and flexible companies in the market. We love to say "Yes"



Certified quality

We focus on the highest quality for our products. For this reason, we carry out continuous quality certifications by renowned European certification institutes.



Lightweight and extremely durable

Thanks to our special reinforcements and extremely resistant fillings, our vaults offer maximum protection and can be flexibly adapted to your individual security requirements.



Short construction times

By eliminating the drying time of the concrete, the use of modular vaults (with prefabricated elements) results in a shorter construction time, allowing you to put your vault into operation more quickly.



Advanced technologies

Whether its the automation of your door or remote management of your locking systems, we have a series of long term partnerships with specialist providers to meet your needs



Optional Fire & Flood protection

In addition to burglary resistance, you can additionally protect your valuables against the threats of fire & flooding. Cerberus vaults can be offered with certified fire protection to EN1634-1. On special request Cerberus vault doors can also be offered with additional protection against water ingress.

Model Overview

Vault rooms

Our modular vaults are available in 14 security classes from LPS1175 E10 - EN1143-1 Grade XIII EX CD and in various designs. Rooms marked CD are additionally equipped with core drill protection. All models with EX also offer additional protection against attacks with explosives.



CD: Additional protection against attacks with core drills

EX: Additional protection against attacks with explosives

Model	Resistance grade	Wall thickness (mm)	Weight (approx. kg/m²)
Biovault E10	LPS1175 E10	27	90
Orthrus F10	LPS1175 E10	27	90
Orthrus G5	LPS1175 G5	27	90
Cerberus 2-27	Grade II	27	90
Cerberus 2- 070	Grade II	70	200
Cerberus 3	Grade III	70	210
Cerberus 4	Grade IV	70	210
Cerberus 5	Grade V EX	70	220
Cerberus 6	Grade VI EX	70	225
Cerberus 8	Grade VIII EX CD	125	390
Cerberus 10 - 150	Grade X EX CD	150	480
Cerberus 10 - 195	Grade X EX CD	195	600
Cerberus 11- 200	Grade XI EX CD	200	640
Cerberus 11 - 250	Grade XI EX CD	250	750
Cerberus 12 - 250	Grade XII EX CD	250	780
Cerberus 12 - 325	Grade XII EX CD	325	970
Cerberus 13	Grade XIII EX CD	415	1215



10 Steps to your Individual Vault Room

① Clarification of requirements

In order to offer your valuables the best possible protection, it is important to clarify your individual security protection requirements with your insurance company, security consultant, Home Office or Police liaison officer.

② Clarification of the space

The location of your vault, weight and access restrictions, its contents and access requirements will all be discussed to agree the size of your vault room.

③ Door and access

Who, how and when will access be required will then dictate the size of your door, whether you need a day gate and what locking you require.

④ Optional Extras

Alarm & cctv, electrics, ventilation and decorations/finish should all be discussed.

⑤ Cost estimate

Once the first steps have been completed, a cost estimate for the entire project is drawn up, usually within 48-72 hours.,

⑥ Detailed planning

The initial concept is followed by the detailed planning of the vault. Every detail is taken

into account by our planning team in order to meet your requirements.

⑦ Production and delivery date

The next step is to schedule the production process. Aspects such as the delivery time and delivery date are discussed.

Most vault rooms take around 10-12 weeks to manufacture, once everything is finalised.

⑧ Room certificate

Once your vault room has been installed, a full inspection of the construction and the welding is undertaken. Evidence is submitted to the ECBS and only then can a certificate be issued for your completed project.

⑨ Commissioning

In the penultimate step our engineers will install and commission your locking systems and fit brackets for alarm connections, electrics and decorative panels. Your vault will be ready for your other contractors to complete and put into operation.

⑩ Insurance documentation

We will provide you with documentation that can be shared with your insurer, Home Office or Police liaison to prove the security rating of your vault.

Notes for **Delivery & Installation**

Precise compliance with all requirements during the delivery and installation of a Burton Security vault room is essential to provide maximum safety, security and functionality. This is how we ensure quality, reliability and the trust of our customers.

Site preparation

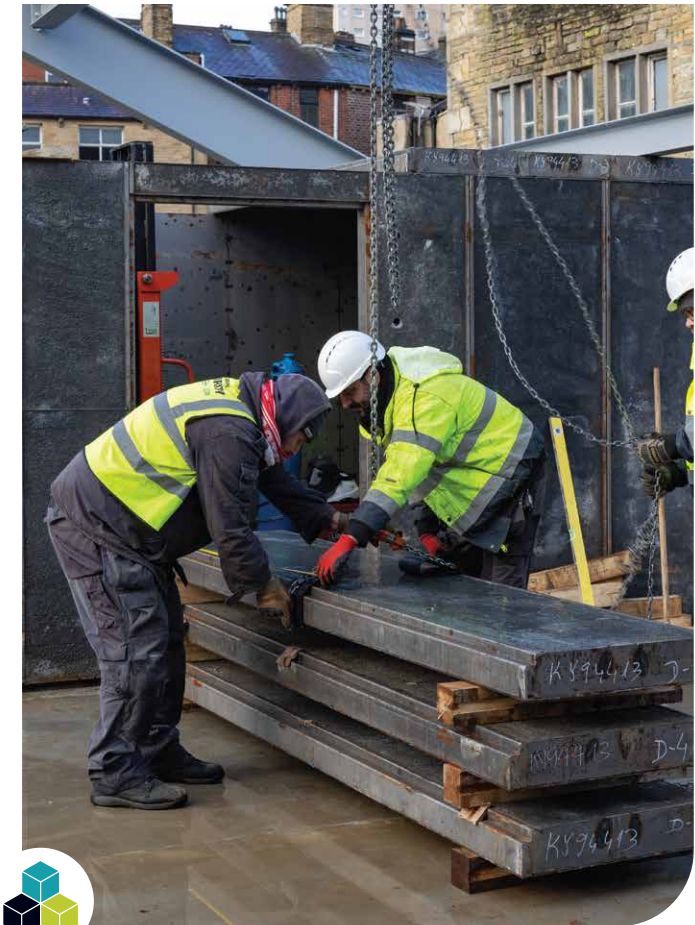
This will determine how the elements and the door are to be installed.
Every building is different and so a variety of methods must be used.
Cranes, hiabs and forklifts are regularly used. But more traditional methods of lifting and rolling can often still be required.
A flat floor is essential to correct assembly of the walls and operation of the door.
If the building floor is not level then special leveling plates must be used.



ATTENTION The transportation route through the building must be capable of carrying the weight of the elements and the vault door. It is the responsibility of the customer to ensure that structural loads have been checked.

Installation

Cerberus, Orthrus & Biovault rooms are self supporting structures. They are typically delivered as 6 sided rooms, although 5 sided (without a floor) are also possible. Installation is quite fast, without the need for any wet works. A typical installation time is 1-2 weeks for most rooms.
Panels are pre-fabricated in the factory and shipped to site. They are assembled and slotted together to form a complete room. They are then welded from the inside to ensure full security, stability and safety.





More Equipment

①

Vault Doors

More on page 17

②

Safe Deposit Boxes

More on page 23

③

Software & Access Solutions

More on page 29

④

Standard and Custom Ventilation and Cable Holes

As standard we provide a bundle of 40mm ventilation and cable holes above and next to the vault door. Additional holes can be provided in other locations as you require. We can also provide a larger ventilation hole up to a maximum 130mmx275mm. Biovault can be supplied with even larger ventilation panels suitable for laboratory use.

⑤

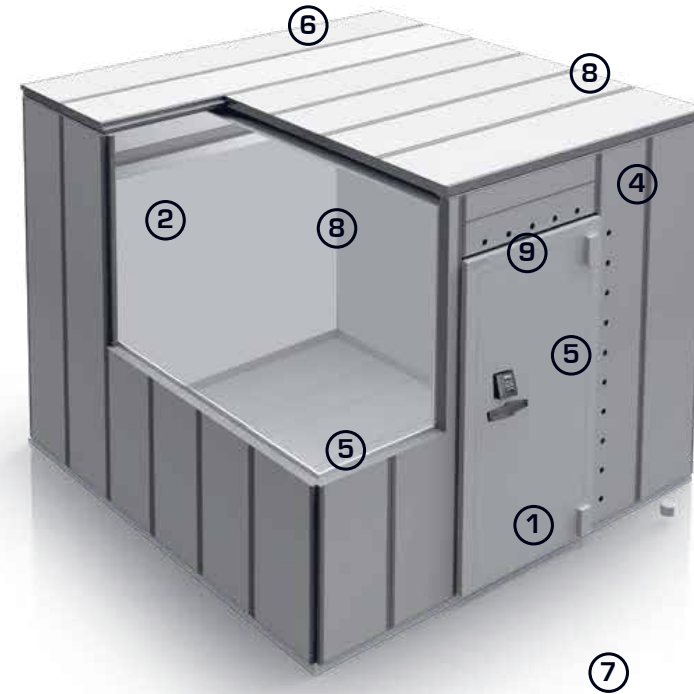
Alarm preparation

Burton Security can provide special brackets and sensors for seismic detection on the vault walls, ceiling, floor and door. Sensors to determine the position and locking status of the door can also be provided.

⑥

Decoration preparation

If you wish to finish the inside or outside of your vault room with plaster board or other decorative panels, we can supply steel profiles welded to the panels to allow the fast and easy installation.



⑦

Ramps

Ramps can be supplied to overcome any step up into the vault room.

⑧

Vault Panel Finishes and Customization Options

Vault panels are provided as raw concrete outside and bare steel inside. We offer the option of applying a primer and final coat of paint to the steel work. Biovault can be finished using Fundermax boards available in a large number of colours and styles. Laboratory, wipe clean and food safe finishes are also available.

⑨

Fire protection upgrade to provide 60 or 120 minutes resistance

Vault Doors

Grade II to XIII EX CD



Vault Doors Models

Biovault, Orthrus and Cerberus vault doors can be supplied either as a stand alone item, designed to be set into your own cast vault walls or, as part of a full vault room from Burton Security. When part of a full vault room, they will offer the same level of security protection as the main vault.

We offer a wide range of options and customisations. Standard size doors represent the best value and shortest production times. But any size can be produced within the minimum and maximum clear opening dimensions listed in the table. Even larger doors can be produced on special request.

ED: Emergency door
IED: Integrated emergency door
CD: Additional protection against attacks with core drills
EX: Additional protection against attacks with explosives

In addition to the specified door thickness, 60mm must be allowed for Hinges, handles & locks.

Model	Resistance grade VdS ECB-S	Fire Resistance** (minutes)	Min/Max * Height (mm)	Min/Max* Width (mm)	Standard Size Clear passage (h x w, mm)	Door thickness (mm)	Weight (approx. kg)
Cerberus 2	Grade II		1810 - 3950	510 - 1950	1960 x 910	160	850
Cerberus 2 ED	Grade II		1810 - 3950	510 - 1950	1068 x 514	160	340
Cerberus 2 IED	Grade II		1810 - 3950	510 - 1950	1960 x 910	160	900
Cerberus 3	Grade III		1810 - 3950	510 - 1950	1960 x 910	160	880
Cerberus 3 ED	Grade III		1810 - 3950	510 - 1950	1068 x 514	160	360
Cerberus 3 IED	Grade III		1810 - 3950	510 - 1950	1960 x 910	160	930
Cerberus 4	Grade IV		1810 - 3950	510 - 1950	1960 x 910	160	880
Cerberus 4 ED	Grade IV		1810 - 3950	510 - 1950	1068 x 514	160	360
Cerberus 4 IED	Grade IV		1810 - 3950	510 - 1950	1960 x 910	160	930
Cerberus 5	Grade V		1810 - 3950	510 - 1950	1960 x 910	160	880
Cerberus 5 ED	Grade V		1810 - 3950	510 - 1950	1068 x 514	160	360
Cerberus 5 IED	Grade V		1810 - 3950	510 - 1950	1960 x 910	160	930
Cerberus 6 Biovault/Othrus	Grade VI	60/120	1810 - 3950	510 - 1950	1960 x 910	160	900
Cerberus 6 ED/Biovault/Orthurs	Grade VI		1810 - 3950	510 - 1950	1068 x 514	160	390
Cerberus 8	Grade VIII EX CD	60/120	1810 - 3950	510 - 1950	1960 x 910	225	1410
Cerberus 8 ED	Grade VIII EX CD		1810 - 3950	510 - 1950	1068 x 514	225	605
Cerberus 8 IED	Grade VIII EX CD		1810 - 3950	510 - 1950	1960 x 1000	225	1520
Cerberus 10	Grade X EX CD	60/120	1810 - 3950	510 - 1950	1960 x 910	285	1970
Cerberus 11	Grade XI EX CD	60/120	1810 - 2500	510-1400	1960 x 910	365	2715
Cerberus 12	Grade XII EX CD		1810 - 2500	510-1400	1960 x 910	365	2805
Cerberus 13	Grade XIII EX CD	60/120	1810 - 2500	510-1400	1960 x 921	365	4300

*Larger dimensions available on special request **Option only. Must be requested at point of order

Types of Vault Doors



Grade V EX

Standard

The standard version of the Cerberus vault door is available across all resistance grades



Grade V XE ED

Emergency Door

Cerberus emergency doors are offered in resistance grades II - VIII EXCD



Grade V EX IED

Standard with Integrated Emergency Door

The standard versions with an integrated emergency door are available up to Grade VIII EX CD



Up to Grade XIII EXCD.

Automated Vault Door

Fully automated vault doors can be produced up to Grade XIII EXCD. Available in a range of bespoke sizes to suit your requirements



Security & Features of Vault Doors

All Burton Security vault doors come as standard with an alarm system connection and a primed finish. Additional custom features are available upon request.

Models	Biovault, Orthurs Cerberus Grade II-V	Cerberus Grade VI-XIII
Prepared for alarm system connection	✓	✓
Primed surface	✓	✓
Additional protection against explosive attacks (EX)	—	✓
Switch set for door monitoring	✓	✓
Door Stop - Floor or wall mounted. Also available as a lockable version	✓	✓
Stainless steel entrance step	✓	✓
Factory-applied final coating in any standard RAL colour	✓	✓
Internal panic emergency lock	✓	✓
Dual-side operability (electronic lock)	✓	✓
Custom sizes available	✓	✓
Automated vault doors (opening and closing by motor)	✓	✓
Special plating of the handle & boltwork in polished chrome, brass or antique bronze	✓	✓
Customisable back pan with customer logo	✓	✓
Fire protection	—	✓
Flood protection	✓	✓

✓ Standard ✓ Optional



NOTE Please note that for the correct certification, the vault room and door must be selected with the same resistance level.

Fully Automated Vault Doors Integrates into an automated currency ecosystem

Cerberus automated doors have been designed for cutting edge facilities within central banks, money printing facilities and bullion storage sites. They allow the integration of automated systems and safe passage of robot self guided vehicles within the highest security areas of these buildings. They are all designed to order and we can accommodate many different requests according to the requirements of your facility. Security is paramount in our designs and we can deliver most requests with fully certified doors up to EN1143-1 Grade XIII.

Key Features & Capabilities

Fully Motorised Operation

Remote monitoring

One touch closing & locking

Optional alarm integration for automated blocking & closing in emergency situations

- Motorised door opening
- Motorised boltwork mechanism
- Motorised safe lock



Full integration with high security Insys locking system

- Local or remote door control
- Certified to EN1300 Class C and EN17646

Flexible User Options

- *Dual control*
- *99 users + Manager codes*
- *Certified to EN1300 & EN17646 Class C*
- *Open via PIN code and optional RFID as secondary authentication*
- *One Time Code functionality*
- *Automatic locking*
- *Remote blocking*
- *Event history download for full audit trail*
- *Optional networked monitoring and programming*

Engineered for Automation and Safety

- Oversized door options for AGV (Automated Guided Vehicle) access
- Built-in sensors and safety mechanisms to prevent accidents
- Multiple inputs/outputs for integration with external systems
- Flexible software programming tailored to your operational needs



Day Gates

Day gates for vaults serve as additional security when the vault door is open and prevent unauthorized access to the vault room.

Burton Security day doors are available in different versions.

The standard version has vertical bars and a regular hinged operation. Options include an access protection plate and a fully glazed version with customised graphics. Locking options include key or electric strike and a sliding operation is also possible on request.



Image Gate door with integrated emergency door

Equipment	Gate Door	Gate Door with Handle Protection	Glass Door
1 double cylinder lock with 3 keys	✓	✓	✓
Electric door opener	✓	✓	✓
Hydraulic door closer	✓	✓	✓
Fittings - outside knob / inside lever handle	—	✓	✓
Fittings - outside knob / inside knob	—	✓	✓
RAL finish of your choice	✓	✓	—
Access protection plate	✓	✓	—
Sliding operation	✓	✓	—
Perspex cover	✓	✓	—
Metal mesh cover	✓	✓	—

☒ Standard
 ☐ Optional

Standard Locks for Vault Doors



		Biovault & Orthrus	Biovault & Orthrus	Cerberus III	Cerberus IV	Cerberus V	Cerberus VI	Cerberus VIII	Cerberus X	Cerberus XI	Cerberus XII	Cerberus XIII
Required number of locks and required minimum lock class (for example AWT: 1x lock from class A)	VdS/ EN 1300	1xB	1xB	1xB	2xB	2xB	2xC	2xC	2xC	3xC/2xD	3xC/2xD	2xD
Key locks												
Key lock S+G convertible 6880 (1 guide tube, 2 key bits)	2/B	✓	✓	✓	✓	✓						
Key lock S+G convertible 6990 1 guide tube, 2 key bits)	3/C	✓	✓	✓	✓	✓	✓	■	✓	✓	✓	
Electronic locks												
Electronic lock dormakaba, Axessor USB	2/B	✓	✓	✓	✓	✓						
Insys Twinlock	3/C	✓	✓	✓	✓	✓	✓	✓	✓	✓	✓	✓
Electronic lock dormakaba Paxos advance Set 5 (Additional lock for set 1/3)*	2/B 3/C	✓	✓	✓	✓	✓	✓	■	✓	✓	✓	
Electronic lock dormakaba Paxos advance Set 4 (flat dialing knob)	4/D									✓	✓	✓
Mechanical combination locks												
Number combination lock La Gard 3390 VZ (3 wheels)	2/B	✓	✓	✓	✓	✓						
Number combination lock La Gard 1947 (4 wheels)	3/C	✓	✓	✓	✓	✓	✓	✓	✓			

✓ Standard ✓ Optional

*can only be used in combination with set 1/set 3

MORE LOCKS

Other lock models and various lock options can also be used for customised solutions on request.

Additional Security Products

We are your one stop shop for Physical security solutions



Armoured Doors



Window Security



Security Walling



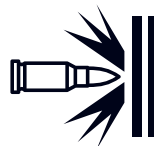
Access Control



Counters & Screens



Interlocking PODs



BALLISTIC

Bullet resistant solutions



Our growth is through design,
**innovation and investment
in British engineering.**

Our mission is to fortify the foundations of security by delivering forward-thinking physical security solutions. We are driven by a commitment to anticipate and adapt to evolving threats, providing our clients with proactive, cutting-edge security measures.

 **BURTON
SECURITY**

enquiries@burtonsecurity.com
Brockholes Business Park
Rock Mill Road,
Holmfirth, HD9 7BN

www.burtonsecurity.com



Security is our top priority!

Your personal contact

If you have any questions or technical concerns, our competent team is always on hand to help you in the shortest time possible.



Wayne Mack

Commercial & Project Sales Manager

wayne.mack@burtonsecurity.com

+ 44 01484 663388

www.burtonsecurity.com | +44 (0) 1484 663388 | enquiries@burtonsecurity.com
Brockholes Business Park, Rock Mill Road, Holmfirth, HD9 7BN