

## Lithium-ion battery safes

+ Certified + Tested + Internationally recognised



think safe

# Batteryguard XL battery safes

- + VDMA 24994 certified
  - Tested by independent European institute (ECB-S)
- + Accepted by insurers
  - Complies with the strictest safety requirements
- + Ahead of European regulations
  - A safe and future-proof investment
- + With smart ElectrIQ charging system
  - Charges even large batteries via a standard socket



think safe

## Contents

Introduction	06
Batteryguard XL VDMA 24994	08
ElectrIQ smart charging system	10
Batteryguard models	12
Batteryguard XL 230V	12
Batteryguard XL 400V	14
Additional options	16
Extra-deep safe compartments	16
Docking stations and pull-out drawers	17
Battery safe with a personal code	17
Dimensions	18
VDMA certification	19
Our customers	20
About us	23

### Certified, tested and internationally recognised

With a Batteryguard battery safe, you charge your batteries without risk - day and night, in any working environment. Smart, certified and tested.

Curious about customer stories or how Batteryguard is designed and built?



Check out the playlist!

# Introduction

batteryguard

## Prevent battery fires, charge safely with Batteryguard

Do you work with lithium-ion batteries? Then you know how essential they are. They're found in e-bikes, battery tools, pallet trucks and delivery vehicles – and they keep your operation running. But you also know: if a battery gets damaged, it can catch fire.

Battery fires often happen without warning, are hard to extinguish, and spread fast. In the worst case, your entire premises can go up in flames within minutes. This brings a risk of injury, inventory loss and long-term operational downtime. Of course, you want to prevent this – and you can.

With Batteryguard, you reduce the risk of battery fires without disrupting your work process. The certified Batteryguard battery safes offer proven protection and ease of use.

## Safe charging, even when you're not around

Even without supervision, you can safely charge your batteries. If a fire does occur, it stays contained inside the safe. Connect the safe to your fire alarm system, and emergency services are alerted automatically – even if no one is on site. That way, you limit damage and keep your business protected.

Did you know insurers are increasingly requiring certified battery safes like those from Batteryguard if you regularly use lithium-ion batteries?

## Quick installation, easy to use

You can get started right away with Batteryguard. The battery safes are plug-and-play: no complex installation, just plug it into a regular socket – no need to modify your fuse box.





# Batteryguard XL

## VDMA 24994

batteryguard

Standard with every Batteryguard XL VDMA 24994 battery safe

- + ECB-S certified to VDMA 24994
- + Key or electronic locking
- + ElectrIQ smart charging system with continuous or sequential modes
- + Fire stays inside the safe – no risk to staff or surroundings
- + Prepared for smoke extraction
- + Can be connected to fire alarm system
- + Warning system for faults, incidents or open doors
- + CE-marked and compliant with relevant EU directives



### Specifications

Article number	Power point	Type of charging system	Number of	Maximum power*	External dimensions HxWxD mm	Weight
BATG3031	230V Type G: BS plug	Sequential	16	3,7 kW	2050 x 940 x 585	510 kg
BATG3032	230V Type G: BS plug	Continuous	16	3,7 kW	2050 x 940 x 585	510 kg
BATG3032	400V Type G: BS plug	Continuous	16	11,0 kW	2050 x 940 x 585	510 kg
BATG3033	400V Type G: BS plug	Continuous/Sequential	16	11,0 kW	2050 x 940 x 585	510 kg
BATG3037	230V Type G: BS plug	Sequential	20	3,7 kW	2050 x 1250 x 585	760 kg
BATG3038	230V Type G: BS plug	Continuous	20	3,7 kW	2050 x 1250 x 650	760 kg
BATG3039	400V Type G: BS plug	Continuous	20	11,0 kW	2050 x 1250 x 650	760 kg
BATG3040	400V Type G: BS plug	Continuous/Sequential	20	11,0 kW	2050 x 1250 x 650	760 kg

\* What do we mean by maximum power?

Maximum power indicates how many batteries you can safely charge at the same time.

### Specifications

Article number	Power point	Type of charging system	Number of	Maximum power*	External dimensions HxWxD mm	Weight
BATG3003	230V Type G: BS plug	Continuous charging	20	3,7 kW	2050 x 1250 x 585	710 kg
BATG3002	230V Type G: BS plug	Sequential charging	20	3,7 kW	2050 x 1250 x 585	710 kg
BATG3004	400V Type G: BS plug	Continuous charging	20	11,0 kW	2050 x 1250 x 585	710 kg
BATG2005-	400V Type G: BS plug	Continuous and sequential charging	20	11,0 kW	2050 x 1250 x 585	710 kg

# ElectrIQ Smart charging system

batteryguard

## How does the smart charging system work?

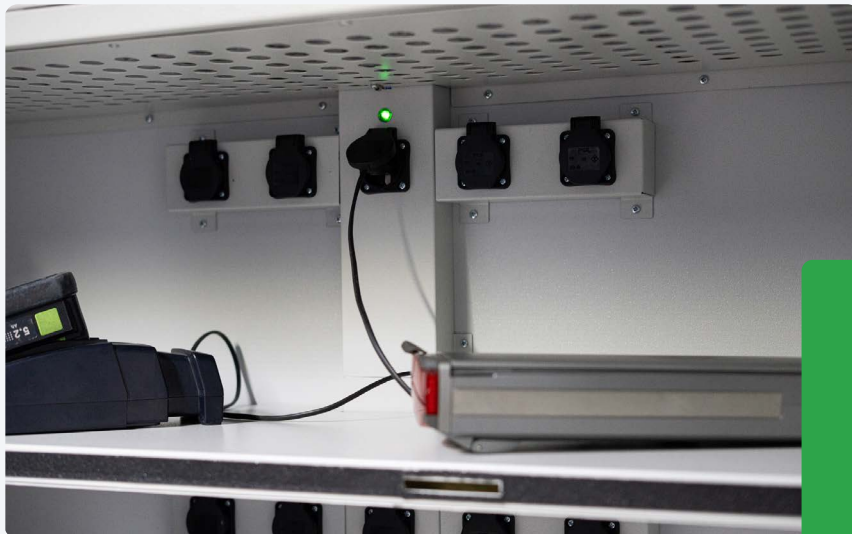
Safely storing batteries is essential – but so is smart charging. Especially when charging multiple batteries at once or using different types of chargers.

ElectrIQ is Batteryguard's smart charging system that prevents overloads – whether you use a standard 230V socket or 400V industrial power. It allows you to charge safely and efficiently, without tripping your fuse box or causing power outages.

electrIQ

## A smart system in three variants

ElectrIQ is available in three versions: continuous, sequential or a combination of both. Which version suits you best depends on the number and type of batteries you charge – and how your work process is structured.



## Too many devices connected? The safe shuts down safely

Overloading happens when chargers demand more current than your power system can handle. With most systems, this leads to a blown fuse and loss of power. Not with Batteryguard. Our safes constantly monitor the load. If it becomes too much, the safe shuts itself off temporarily. No damage, no outage.

# Batteryguard XL 230 V



## 230 V - Continuous charging

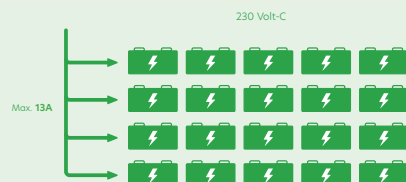
### Safely charge small batteries via a standard socket

Do you work with smaller batteries like those for radios, hand scanners or tools – and don't have access to industrial power? Then this battery safe is exactly what you need. The Batteryguard XL 230V with continuous charging keeps your batteries ready at all times.

### How continuous charging works

This safe uses a continuous charging system: all charging levels are active at once, as long as the total stays under 13 amps. No settings or management needed – the safe does all the work.

- + Suitable for multiple small batteries you want to charge non-stop
- + Charges all levels simultaneously with up to 13A from a standard 230V socket
- + Smart power distribution for continuous day and night charging



## 230 V - Sequential charging

### Smart charging via a standard socket – even for larger batteries

Do you work with e-bike or tool batteries and want to be sure they're all charged by the next day? This is the safe for you. The Batteryguard XL 230V sequential model charges batteries level by level, without overloading your power system – and without needing industrial power.

### How sequential charging works

This safe charges step by step. It starts with one level and only switches to the next when the first is fully charged. This is based on actual charging levels, not fixed times.

- + Ideal for larger batteries or mixed types needing staggered charging
- + Charges one level at a time with up to 13A from a 230V socket
- + Always some batteries ready, others follow automatically



# Batteryguard XL 400 V



## 400 V - Continuous charging

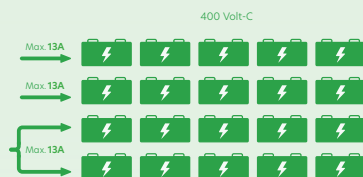
### Charge large batteries with industrial power - always full

Do you work with large batteries for electric pallet trucks, e-scooters or professional tools - and need them charged all day? The Batteryguard XL 400V with continuous charging delivers the speed and safety you need.

### How continuous charging works

This safe charges four levels at once. So you can keep topping up throughout the day and start the next fully loaded. The system distributes current smartly and prevents overload.

- + For many large batteries needing continuous, high-capacity charging
- + Charges levels 1 and 2 simultaneously at 13A each
- + Charges levels 3 and 4 simultaneously at a combined 13A



## 400 V - Continuous and sequential charging

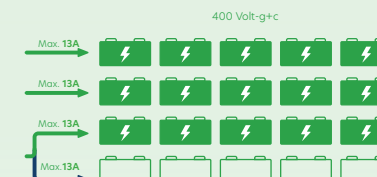
### Charge large and heavy batteries smartly - without overloading

Want to charge very large batteries without overloading your system? And ensure a large number of batteries are always full? This safe is your best option. The Batteryguard XL 400V - continuous & sequential charges three-quarters first, then adds the rest automatically.

### How combined charging works

This safe uses a mix of continuous charging and automated switching. Three levels charge simultaneously - ideal during busy hours. The fourth level switches on only when the third is finished. The system adjusts automatically to prevent overload.

- + The most powerful solution for large and heavy battery charging
- + Charges levels 1, 2 and 3 simultaneously at 13A each
- + Switches level 4 on automatically when level 3 is full



Want to see the safe  
in real life?

You're very welcome to  
visit our showroom!



# Additional options

batteryguard



## Custom interior to suit your batteries

Every organisation operates differently—so each battery safe requires a tailored interior. Batteryguard battery safes can be flexibly arranged. Whether you use small hand tool batteries or large scooter batteries, we ensure everything is stored and charged safely and neatly.

We're happy to assist—contact us at +44 (0) 1484 663388 or [enquiries@burtonsecurity.com](mailto:enquiries@burtonsecurity.com)



## Smart extras: docking stations and pull-out drawers

Frequently charge batteries with fixed chargers or heavy units? Integrated docking stations and pull-out drawers make a difference. With a docking station, you can easily click batteries into place without loose plugs. Pull-out drawers provide easy access without lifting or struggling.



Curious which layout suits your work situation?

We're happy to assist!

## Extra-deep safe compartments – for larger batteries

Dealing with larger batteries, such as those from e-scooters or heavier e-bikes? Opt for a battery safe with extra-deep compartments. This provides ample space for wide or tall batteries without compromising safety or organisation. Ideal if you work with various battery types or need to store batteries horizontally.



## Open the battery safe with a personal code

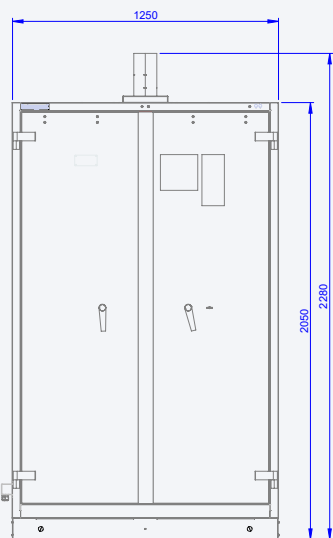
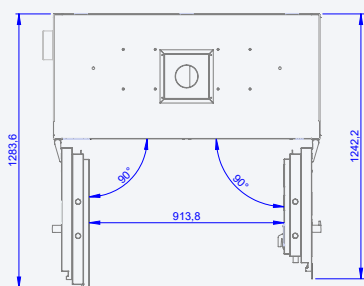
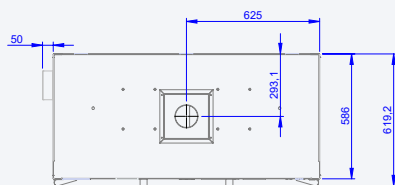
By default, the Batteryguard battery safe is secured with a key lock. Want even more convenience? Choose an electronic code lock. This allows you to open the safe easily with a personal code—no hassle with keys.

Need multiple colleagues to have access? You can easily set individual codes for each person, keeping things organised and secure.



# Dimensions

View the Batteryguard XL from all angles. Below, you'll see the Batteryguard XL from various perspectives, complete with dimensions. This helps you determine if the battery safe fits the desired location and allows for proper installation planning.



# VDMA certification

Working safely with lithium-ion batteries requires solutions that are truly tested. Battery safes that have achieved the VDMA 24994 certificate provide that assurance. To earn this certification, the battery safe must undergo a rigorous fire test at an independent, accredited testing institute under the supervision of ECB-S, the European certification body.

The safe must demonstrate that fire and explosions during a battery fire remain safely contained within. The doors must remain closed under all circumstances, and the exterior of the safe must not become dangerously hot. All measures aim to prevent a battery fire from spreading and endangering your employees, neighbours, or business.



## Prepared for the future

VDMA 24994 forms the basis for upcoming European safety standards. Therefore, many insurers already require a VDMA 24994-certified battery safe if you work with lithium-ion batteries.

The Batteryguard XL is VDMA 24994-certified and thus meets these stringent requirements, ensuring you're well-prepared.

## Bike rental at holiday park

Roompot is the largest provider of holiday parks in the Netherlands, with over 100 locations nationwide. Guests increasingly rent e-bikes and e-choppers.

Previously, batteries were charged outside in the bike shed near the reception. However, after learning about a severe battery fire in a holiday home at a competitor's park, Roompot was alarmed. They sought a reliable solution and found the Batteryguard battery safe.

### Battery exchange procedure at sports desk adjusted

Previously, when renting an e-bike, guests received the charger in the bike bag. This convenience meant guests might take the e-bike and charger to their holiday home and charge the battery there, posing risks.

To prevent this, Roompot adjusted the rental procedure: guests now exchange empty batteries at the sports desk.

[Read the full story on batteryguard.com](https://batteryguard.com)



*"You want to prevent fires for safety. Guests should have a carefree stay and feel safe."*

Tim Vermeulen,  
Roompot employee

## Bike Totaal Thijs Hendriks

Bike Totaal is a leading Dutch retail chain specialising in the sale, service and advice of bicycles and e-bikes. Previously, employees charged batteries on the workbench, even overnight. However, a battery can become extremely hot and catch fire during charging, especially if it's internally damaged.

The danger for Bike Totaal is the uncertainty about battery conditions, as they deal with customers' bikes.

### Safety for staff and family

Owner Rob Hendriks was concerned this could happen in their workshop. Therefore, he acquired a Batteryguard battery safe to protect his staff and family.

[Read the full story on batteryguard.com](https://batteryguard.com)



*"I live above with my family. That's the main reason we now have a battery safe"*

Rob Hendriks,  
owner of Bike Totaal Thijs Hendriks

## Domino's

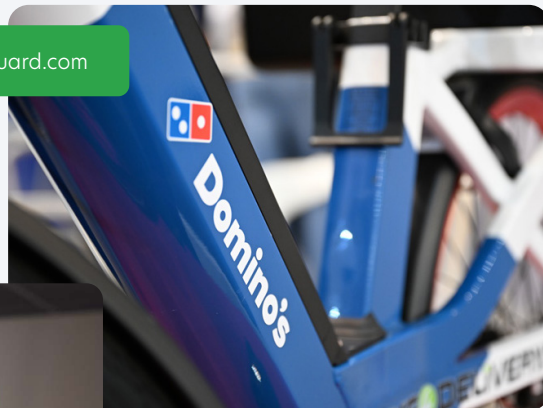
Domino's pizza couriers deliver exclusively with electric vehicles to contribute to a greener future. Previously, charging the lithium batteries of these delivery bikes and scooters was not optimally organised. They were charged wherever a socket was available.

### Destruction, temporary closure, and insurance claims

One day, a battery spontaneously caught fire at the Houten branch, with severe consequences. The store was completely destroyed and had to close for nearly a year. This battery fire impacted not only the Domino's branch but also the residents of the apartments above, who had to relocate temporarily. Additionally, the insurer faced significant damage claims.

Domino's decided to pilot Batteryguard battery safes, aiming to centralise battery charging safely within a battery safe.

Read the full story on [batteryguard.com](https://batteryguard.com)



*"If something goes wrong with a battery, I have full confidence in that safe."*

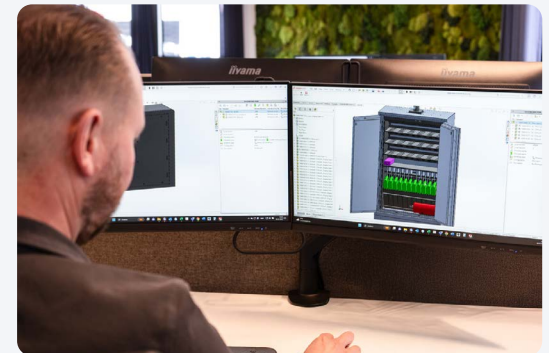
Nico Kruijt  
owner of Domino's Pizza Houten

Batteryguard is a family business with over 60 years of experience in designing and manufacturing high-quality fire- and burglary-resistant safes. This extensive expertise forms the foundation of our Batteryguard battery safes.

With a special fire-resistant safe construction and robust locking mechanism, our battery safes ensure that a battery fire or explosion is contained.

### In-house development and production

Our battery safes are designed by our own R&D team, combining years of experience with the latest technologies to develop innovative solutions that meet the strictest safety requirements. We assemble the safes in-house, allowing us to respond flexibly to changing laws and regulations.



### Collaboration and knowledge sharing

At Batteryguard, we believe safety starts with collaboration. Therefore, we actively share our knowledge and contribute to the development of future safety standards.

We were involved from the beginning in VDMA 24994, actively participating in the European ad hoc working group that established this certification. We work closely with insurers, the safes industry association VGW, other safe manufacturers, battery suppliers, and participate in various lithium-ion working groups.

### Personal advice

Every situation is different, so we're happy to assist. Whether you're looking for a single battery safe or a complete, safe charging setup for multiple batteries—we offer personal advice from start to finish. From the right choice to delivery and professional installation: we've got it covered.

### Contact

Want to know more? Contact our product specialists!



+ 44 01484 663388



[enquiries@burtonsecurity.com](mailto:enquiries@burtonsecurity.com)



[burtonsecurity.com](https://burtonsecurity.com)



batteryguard

think  
safe



Check out  
the playlist!

2025\_08\_01

Contact us at  
+ 44 01484 663388 or  
[enquiries@burtonsecurity.com](mailto:enquiries@burtonsecurity.com)